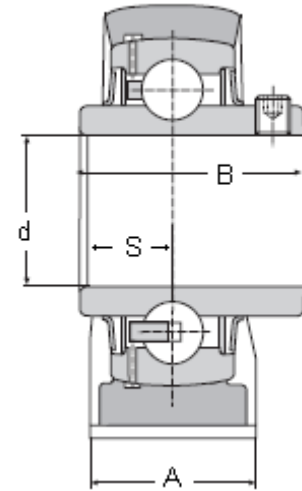
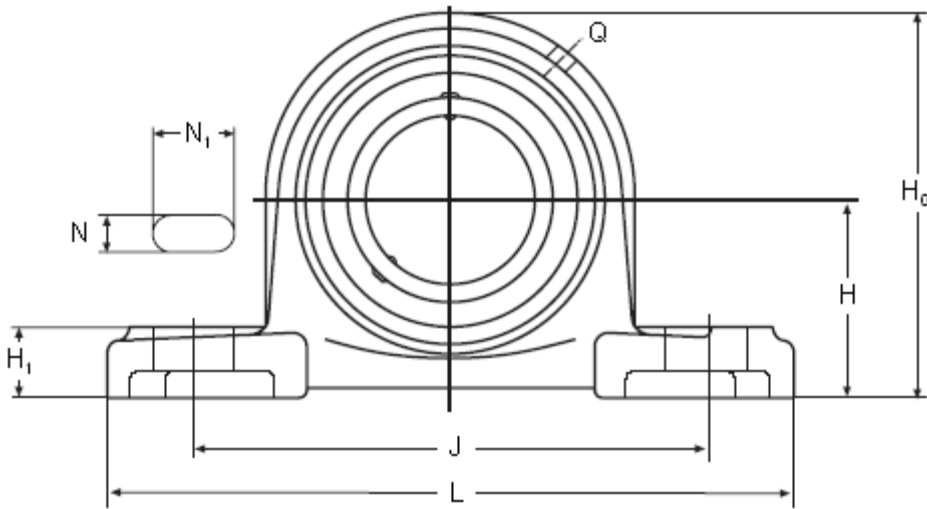




UCP 200 SS - Stainless Steel Pillow Block Units

Set Screw Locking, normal duty, also available in a solid base version, FDA & NSF.



Part No.	d mm	Dimensions (mm)										Mounting		Mass (kg)
		H	L	J	A	N	N ₁	H ₁	H ₀	S	B	Q	Bolt	
UCP 204 SS	20	33,3	127	95	38	13	19	14	65	12,7	31	M6	M10	0,65
UCP 205 SS	25	36,5	140	105	38	13	19	15	71	14,3	34,1	M6	M10	0,72
UCP 206 SS	30	42,9	165	121	48	17	21	17	83	15,9	38,1	M6	M14	1,15
UCP 207 SS	35	47,6	167	127	48	17	21	18	93	17,5	42,9	M6	M14	1,53
UCP 208 SS	40	49,2	184	137	54	17	23	18	98	19	49,2	M6	M14	1,88
UCP 209 SS	45	54	190	146	54	17	23	20	106	19	49,2	M6	M14	2,10
UCP 210 SS	50	57,2	206	159	60	20	25	21	114	19	51,6	M6	M16	2,50
UCP 211 SS	55	63,5	219	172	60	20	25	23	126	22,2	55,6	M6	M16	3,30
UCP 212 SS	60	69,8	241	184	70	20	25	25	138	25,4	65,1	M6	M16	5,50
UCP 213 SS	65	76,2	264	203	70	25	30	27	151	25,4	65,1	M6	M20	5,60
UCP 214 SS	70	79,4	266	210	72	25	30	27	157	30,2	74,6	M6	M20	6,60
UCP 215 SS	75	82,6	275	217	74	25	30	28	163	33,3	77,8	M6	M20	7,30
UCP 216 SS	80	88,9	292	232	78	25	30	30	175	33,3	82,6	M6	M20	8,30

Add suffix **SOLID** to order the solid base version.

Materials:

Bearing Inserts:

Inner & Outer Races: AISI 440C Stainless

Cage: AISI 302 Stainless

Balls: AISI 440C Stainless

Seals: Rubber & AISI 302 Stainless

Set Screws: AISI 420 Stainless

Grease Nipple: AISI 304

Grease: Mobil FM 222 Food Grade FDA & NSF approved

Housing:

AISI 304 Stainless, also available in a solid base version.

The solid base version has no cavities in the bottom where dirt can collect over time, thus making it easier to keep clean.