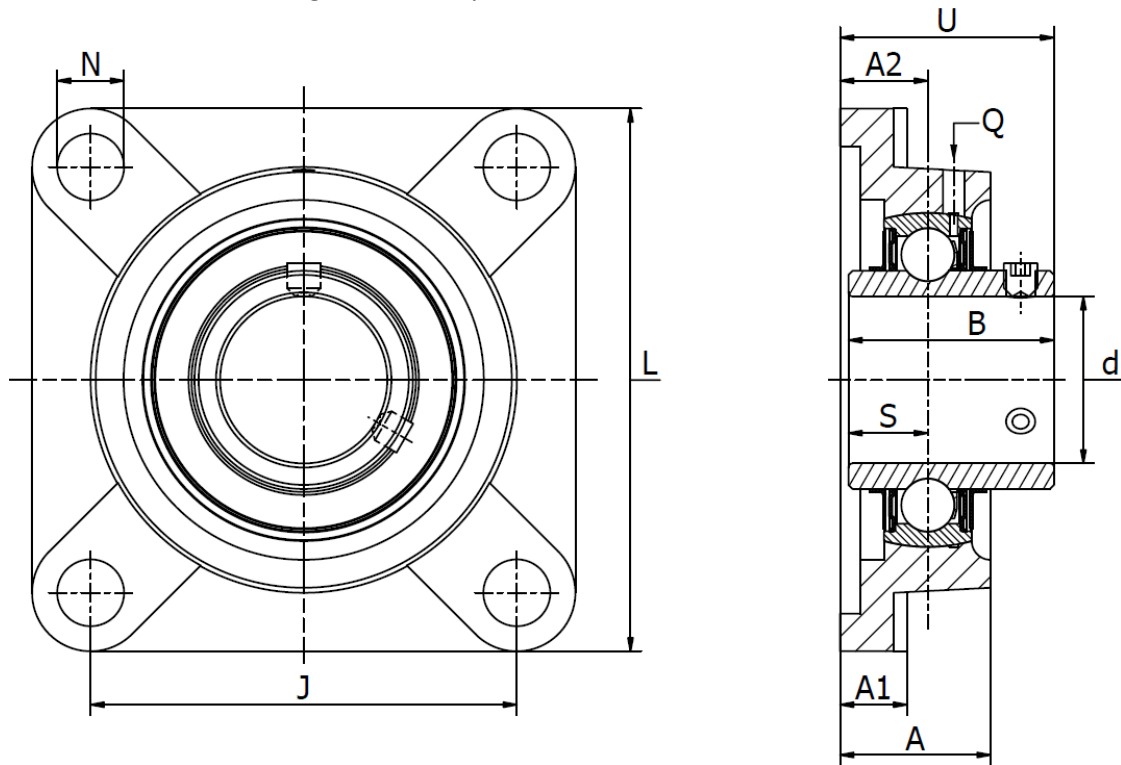




## UCF 200 SS - Stainless Steel 4-Bolt Flange Units

Set Screw Locking, normal duty, also available in a solid base version, FDA & NSF.



| Part No.   | d<br>mm | Dimensions (mm) |     |      |                |                |      |      |      |      |    | Bolt<br>Size | Weight<br>(kg) |
|------------|---------|-----------------|-----|------|----------------|----------------|------|------|------|------|----|--------------|----------------|
|            |         | L               | J   | B    | A <sub>2</sub> | A <sub>1</sub> | A    | U    | N    | S    | Q  |              |                |
| UCF 201 SS | 12      | 86              | 64  | 31,0 | 15             | 11,0           | 25,5 | 33,3 | 12,0 | 12,7 | M6 | M10          | 0,61           |
| UCF 202 SS | 15      | 86              | 64  | 31,0 | 15             | 11,0           | 25,5 | 33,3 | 12,0 | 12,7 | M6 | M10          | 0,61           |
| UCF 203 SS | 17      | 86              | 64  | 31,0 | 15             | 11,0           | 25,5 | 33,3 | 12,0 | 12,7 | M6 | M10          | 0,61           |
| UCF 204 SS | 20      | 86              | 64  | 31,0 | 15             | 11,0           | 25,5 | 33,3 | 12,0 | 12,7 | M6 | M10          | 0,61           |
| UCF 205 SS | 25      | 95              | 70  | 34,0 | 16             | 13,0           | 27,0 | 35,7 | 12,0 | 14,3 | M6 | M10          | 0,80           |
| UCF 206 SS | 30      | 108             | 83  | 38,0 | 18             | 14,3           | 31,0 | 40,2 | 12,0 | 15,9 | M6 | M10          | 1,07           |
| UCF 207 SS | 35      | 117             | 92  | 41,5 | 19             | 15,0           | 34,0 | 44,4 | 14,0 | 17,5 | M6 | M12          | 1,40           |
| UCF 208 SS | 40      | 130             | 102 | 49,2 | 21             | 15,0           | 36,0 | 51,2 | 16,0 | 19,0 | M6 | M12          | 1,80           |
| UCF 209 SS | 45      | 137             | 105 | 49,2 | 22             | 16,0           | 38,0 | 52,2 | 16,0 | 19,0 | M6 | M14          | 2,20           |
| UCF 210 SS | 50      | 143             | 111 | 51,6 | 22             | 16,0           | 40,0 | 54,6 | 16,0 | 19,0 | M6 | M14          | 2,40           |
| UCF 211 SS | 55      | 162             | 130 | 55,5 | 25             | 18,0           | 43,0 | 58,4 | 19,0 | 22,2 | M6 | M16          | 3,50           |
| UCF 212 SS | 60      | 175             | 143 | 65,0 | 29             | 19,5           | 48,0 | 68,7 | 19,0 | 25,4 | M6 | M16          | 4,20           |
| UCF 213 SS | 65      | 187             | 149 | 65,0 | 30             | 22,0           | 50,0 | 69,7 | 19,0 | 25,4 | M6 | M16          | 5,30           |
| UCF 214 SS | 70      | 193             | 152 | 74,6 | 31             | 22,0           | 54,0 | 75,4 | 19,0 | 30,2 | M6 | M16          | 5,90           |
| UCF 215 SS | 75      | 200             | 159 | 78,0 | 34             | 22,0           | 56,0 | 78,5 | 19,0 | 33,3 | M6 | M16          | 6,30           |
| UCF 216 SS | 80      | 208             | 165 | 82,5 | 34             | 22,0           | 57,0 | 83,3 | 23,0 | 33,3 | M6 | M20          | 7,30           |

Add suffix **SOLID** to order the solid base version.

### Bearing Inserts:

Inner & Outer Races: AISI 420-440 Stainless

Cage: AISI 302 Stainless

Balls: AISI 420-440 Stainless

Seals: Rubber & AISI 302 Stainless

Set Screws: AISI 420 Stainless

Grease Nipple: AISI 304

Grease: Mobil FM 222 Food Grade FDA & NSF approved

### Housing:

AISI 304 Stainless, also available in a solid base version.

The solid base version has no cavities in the bottom where dirt can collect over time, thus making it easier to keep clean.