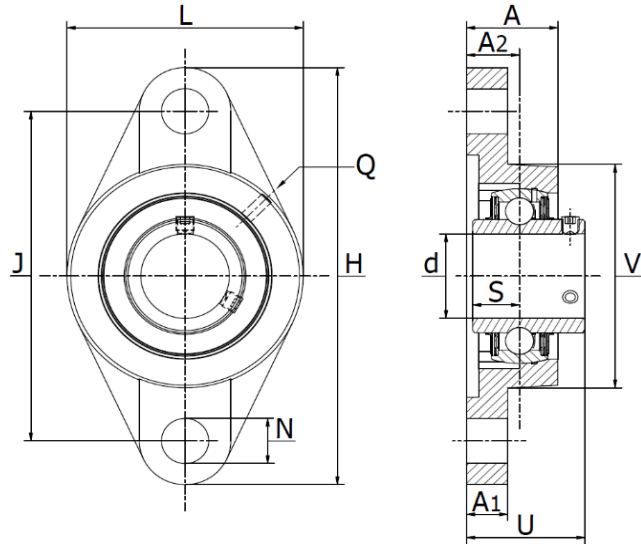
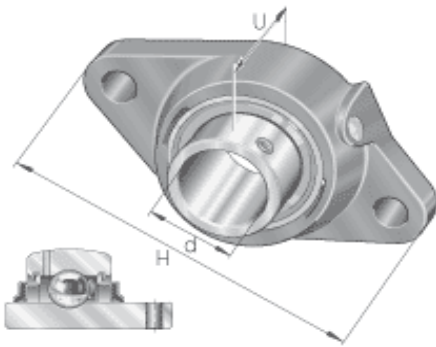




UCFL 200 SS - Stainless Steel 2-Bolt Flange Units

Set Screw Locking, normal duty, also available with a solid base. FDA & NSF grease.



Part No.	d mm	Dimensions (mm)										Bolt Size	Weight (kg)
		H	J	L	A ₂	A ₁	A	U	N	S	Q		
UCFL 201 SS	12	99	76	60	15	11	27	30,9	12	11,5	M6	M10	0,45
UCFL 202 SS	15	99	76	60	15	11	27	30,9	12	11,5	M6	M10	0,45
UCFL 203 SS	17	99	76	60	15	11	27	30,9	12	11,5	M6	M10	0,43
UCFL 204 SS	20	113	90	60	15	11	25,5	33,3	12	12,7	M6	M10	0,48
UCFL 205 SS	25	130	99	68	16	13	27	35,7	16	14,3	M6	M10	0,60
UCFL 205 SS-1000	25	123,7	98,8	68	16	13	27	35,7	12	14,3	M6	M10	0,60
UCFL 206 SS	30	148	117	80	18	13	31	40,2	16	15,9	M6	M10	0,90
UCFL 207 SS	35	161	130	90	19	15	34	44,4	16	17,5	M6	M12	1,20
UCFL 208 SS	40	175	144	100	21	15	36	51,2	16	19	M6	M12	1,50
UCFL 209 SS	45	188	148	108	22	16	38	52,2	19	19	M6	M16	1,90
UCFL 210 SS	50	197	157	115	22	16	40	54,6	19	19	M6	M16	2,20
UCFL 211 SS	55	224	184	130	25	18	43	58,4	19	22,2	M6	M16	3,10
UCFL 212 SS	60	250	202	140	29	18	48	68,7	23	25,4	M6	M16	4,00
UCFL 213 SS	65	258	210	155	30	20	50	69,7	23	25,4	M6	M20	5,00
UCFL 214 SS	70	265	216	160	31	20	54	75,4	23	30,2	M6	M20	5,60
UCFL 215 SS	75	275	225	164	34	22	55	78,5	23	33,3	M6	M20	6,20
UCFL 216 SS	80	290	233	180	34	22	58	83,3	25	33,3	M6	M22	7,80

Add suffix **SOLID** to order the solid base version.

Materials:

Bearing Inserts:

Inner & Outer Races: AISI 420-440 Stainless

Cage: AISI 302 Stainless

Balls: AISI 420-440 Stainless

Seals: Rubber & AISI 302 Stainless

Set Screws: AISI 420 Stainless

Grease Nipple: AISI 304

Grease: Mobil FM 222 Food Grade FDA & NSF approved

Housing:

AISI 304 Stainless, also available with a solid base.

The solid base version has no cavities in the bottom where dirt can collect over time, thus making it easier to keep clean.