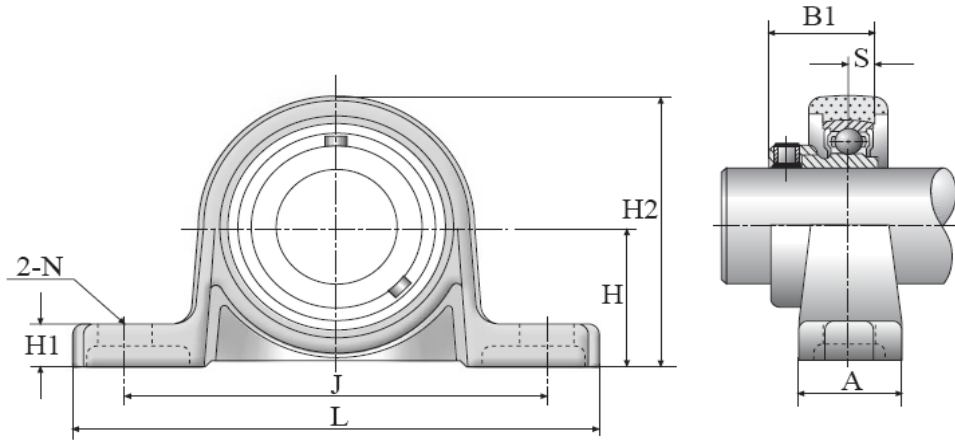




## MUP000.U2 - Pillow Block Housing Series

Silver Series, rustproof zinc aluminium housing, stainless steel bearings, eccentric locking collar.



Inner & Outer Races:	AISI 440C Stainless
Balls:	AISI 440C Stainless
Seals:	Rubber
Eccentric Locking Collar:	AISI 304 Stainless
Grease:	FDA food approved grease

Shaft $\varnothing$ (mm)	Unit No.	Dimensions (mm)											Mounting bolt size	Weight (g)	Basic load rating (N)		
		H	L	J	A	A1	A2	N	H <sub>1</sub>	H <sub>2</sub>	B <sub>1</sub>	S			C <sub>1</sub>	Cr	Cor
8	<b>MUP08.U2</b>	15	55	42	13	-	-	4,8	5	29	15,0	3,5	-	M 4	47	2840	1420
10	<b>MUP000.U2</b>	18	67	53	16	33	2	7,0	6	35	17,5	4,0	2	M 6	77	3900	1550
12	<b>MUP001.U2</b>	19	71	56	16	33	2	7,0	6	38	17,5	4,0	2	M 6	91	4300	1900
15	<b>MUP002.U2</b>	22	80	63	16	34	2	7,0	7	43	18,5	4,5	2	M 6	125	4750	2250
17	<b>MUP003.U2</b>	24	85	67	18	37	2	7,0	7	47	20,5	5,0	2	M 6	156	5100	2650
20	<b>MUP004.U2</b>	28	100	80	20	45	3	10,0	9	55	24,5	6,0	3	M 8	230	7900	4000
25	<b>MUP005.U2</b>	32	112	90	20	47	3	10,0	10	62	25,5	6,0	3	M 8	294	8600	4650
30	<b>MUP006.U2</b>	36	132	106	26	49	4	13,0	11	70	26,5	6,5	4	M 10	454	11300	6600