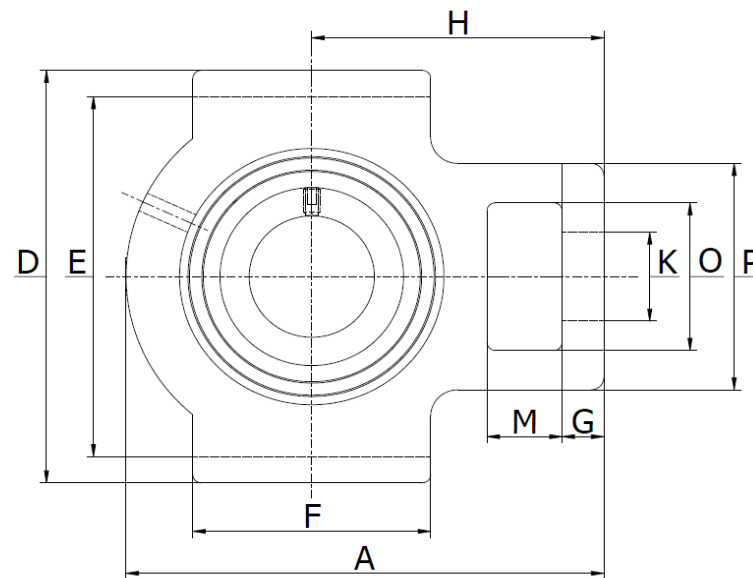
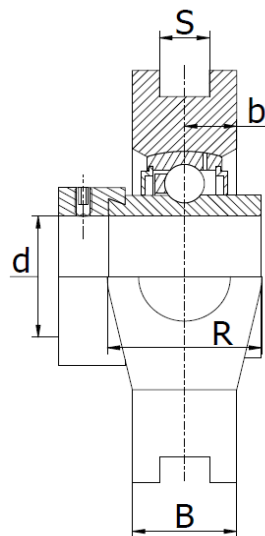




WS 200 U - Take-up housing

Set screw locking, wide slot.



| Part No. | Shaft | | Dimensions (mm) | | | | | | | | | | | | | | Bearing | Housing | Weight (kg) |
|-----------------|-------|-----|-----------------|------|-------|-------|-------|----|-------|----|------|------|------|-----|-----|------|---------|---------|-------------|
| | d | A | B | b | D | E | F | G | H | K | L | M | O | P | R | S | | | |
| WS 204 U | 20 | 94 | 24 | 12,0 | 89 | 76,2 | 51,0 | 10 | 60,3 | 19 | 30,2 | 16 | 32,0 | 51 | 51 | 13,5 | UC 204 | WS 204 | 0,7 |
| WS 205 U | 25 | 97 | 24 | 12,0 | 89 | 76,2 | 51,0 | 10 | 62,0 | 22 | 31,8 | 16 | 32,0 | 51 | 51 | 13,5 | UC 205 | WS 205 | 1,0 |
| WS 206 U | 30 | 113 | 28 | 14,0 | 102 | 89,0 | 57,0 | 10 | 70,0 | 22 | 34,2 | 16 | 36,5 | 56 | 56 | 13,5 | UC 206 | WS 206 | 1,6 |
| WS 207 U | 35 | 129 | 30 | 15,0 | 102 | 89,0 | 63,5 | 13 | 78,0 | 22 | 40,4 | 16 | 36,5 | 64 | 64 | 13,5 | UC 207 | WS 207 | 2,0 |
| WS 208 U | 40 | 144 | 35 | 17,5 | 114,2 | 102,0 | 82,5 | 16 | 89,0 | 28 | 47,7 | 19 | 49,0 | 83 | 83 | 17,5 | UC 208 | WS 208 | 2,7 |
| WS 209 U | 45 | 144 | 35 | 17,5 | 117 | 102,0 | 82,5 | 16 | 87,0 | 28 | 47,7 | 19 | 49,0 | 83 | 83 | 17,5 | UC 209 | WS 209 | 2,9 |
| WS 210 U | 50 | 149 | 37 | 18,5 | 117 | 102,0 | 85,7 | 16 | 90,0 | 28 | 50,1 | 19 | 49,0 | 83 | 83 | 17,5 | UC 210 | WS 210 | 3,2 |
| WS 211 U | 55 | 171 | 38 | 19,0 | 146 | 130,0 | 95,0 | 19 | 106,0 | 35 | 53,9 | 25,4 | 63,5 | 102 | 102 | 27,0 | UC 211 | WS 211 | 4,2 |
| WS 212 U | 60 | 194 | 46 | 23,0 | 146 | 130,0 | 102,0 | 19 | 119,0 | 35 | 62,7 | 32 | 63,5 | 102 | 102 | 27,0 | UC 212 | WS 212 | 5,9 |