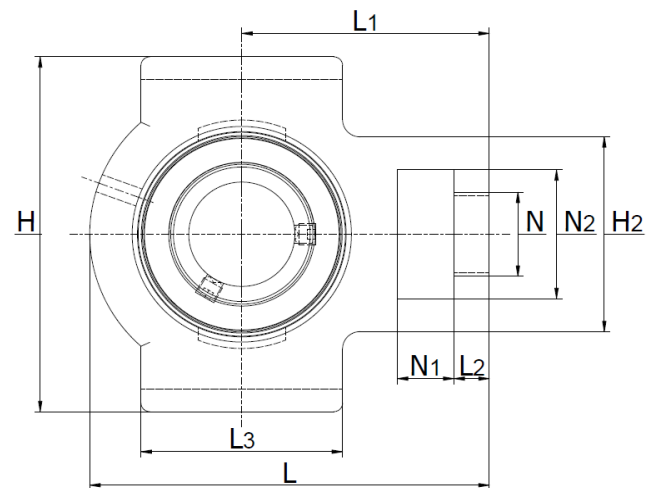
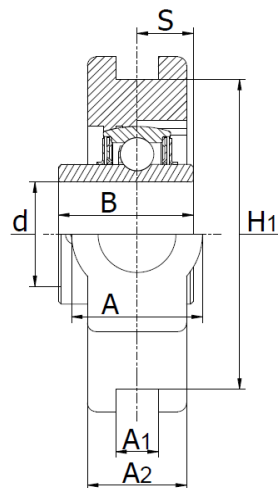




UCT 300 Series

Set Screw Locking



Part No.	d (mm)	Dimensions (mm)															Bearing No.	Housing No.	Weight (kg)
		N ₁	L ₂	H ₂	N ₂	N	L ₃	A ₁	H ₁	H	L	A	A ₂	L ₁	B	S			
UCT 305	25	16	12	62	36	26	65	12	80	89	122	36	26	76	38	15	UC305	T305	1,4
UCT 306	30	18	14	70	41	28	74	16	90	100	137	41	28	85	43	17	UC306	T306	1,8
UCT 307	35	20	15	75	45	30	80	16	100	111	150	45	32	94	48	19	UC307	T307	2,5
UCT 308	40	22	17	83	50	32	89	18	112	124	162	50	34	100	52	19	UC308	T308	3,1
UCT 309	45	24	18	90	55	34	97	18	125	138	178	55	38	110	57	22	UC309	T309	4,1
UCT 310	50	27	20	98	61	37	106	20	140	151	191	61	40	117	61	22	UC310	T310	5,3
UCT 311	55	29	21	105	66	39	115	22	150	163	207	66	44	127	66	25	UC311	T311	6,4
UCT 312	60	31	23	113	71	41	123	22	160	178	220	71	46	135	71	26	UC312	T312	7,6
UCT 313	65	32	25	116	70	43	134	26	170	190	238	80	50	146	75	30	UC313	T313	9,2
UCT 314	70	36	25	130	85	46	140	26	180	202	252	90	52	155	78	33	UC314	T314	12,0
UCT 315	75	36	25	132	85	46	150	26	192	216	262	90	55	160	82	32	UC315	T315	13,0
UCT 316	80	42	28	150	98	53	160	30	204	230	282	102	60	174	86	34	UC316	T316	16,0
UCT 317	85	42	30	152	98	53	170	32	214	240	298	102	64	183	96	40	UC317	T317	19,0
UCT 318	90	46	30	160	106	57	175	32	228	255	312	110	66	192	96	40	UC318	T318	21,0
UCT 319	95	46	31	165	106	57	180	35	240	270	322	110	72	197	103	41	UC319	T319	24,0
UCT 320	100	48	32	175	115	59	200	35	260	290	345	120	75	210	108	42	UC320	T320	31,0
UCT 321	105	48	32	175	115	59	200	35	260	290	345	120	75	210	112	44	UC321	T321	30,0
UCT 322	110	52	38	185	125	65	215	38	285	320	385	130	80	235	117	46	UC322	T322	39,0
UCT 324	120	60	42	210	140	70	230	45	320	355	432	140	90	267	126	51	UC324	T324	55,0
UCT 326	130	65	45	220	150	75	240	50	350	385	465	150	100	285	135	54	UC326	T326	69,0
UCT 328	140	70	50	230	160	80	255	50	380	415	515	155	100	315	145	59	UC328	T328	84,0