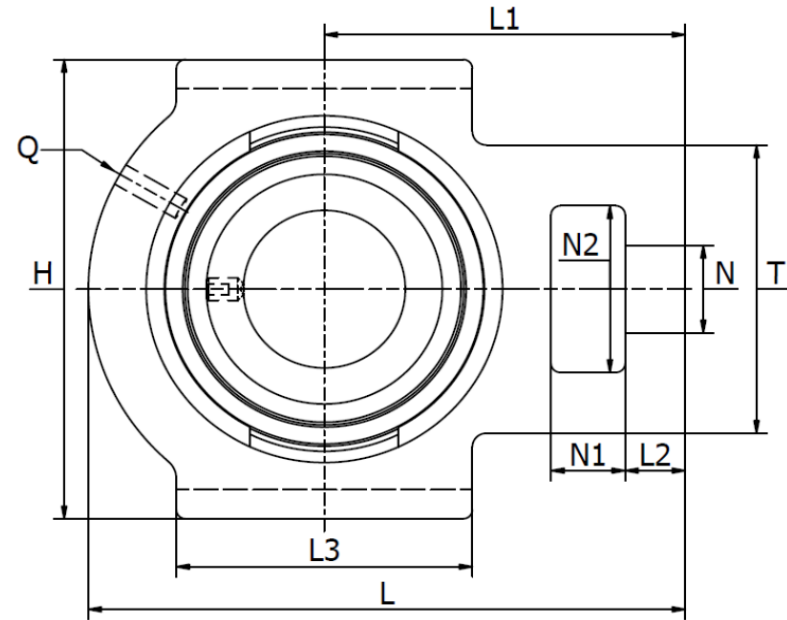
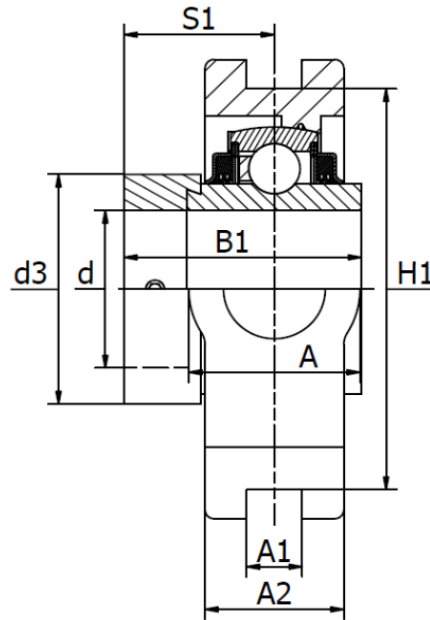




SKL ... T (TTUE ...)

Cast iron housing, radial insert ball bearing with eccentric locking collar, R3 seals. Temperature range -30°C to +110°C



Product No.	d mm	Dimensions (mm)																Bearing No.	Weight (kg)	
		L	H	A	A ₁	A ₂	B ₁	d _{3max}	H ₁	L ₁	L ₂	L ₃	N	N ₁	N ₂	Q	S ₁			T
SKL 25 T	25	97	89	32	12	24	44,4	37,5	76	62	10	51	19	16	32,0	M6	26,9	51	HC 205 R3	0,91
SKL 30 T	30	113	102	37	12	28	48,4	44,0	89	70	10	57	22	16	37,0	M6	30,1	56	HC 206 R3	1,24
SKL 35 T	35	129	102	37	12	30	51,5	51,0	89	78	13	64	22	16	37,0	M6	32,3	64	HC 207 R3	1,80
SKL 40 T	40	144	114	49	16	33	56,3	60,3	102	88	16	83	29	19	49,0	M6	34,9	83	HC 208 R3	2,52
SKL 45 T	45	144	117	49	16	35	56,3	63,0	102	87	16	83	29	19	49,0	M6	34,9	83	HC 209 R3	2,61
SKL 50 T	50	148	117	49	16	37	62,7	69,0	102	90	16	86	29	19	49,0	M6	38,1	83	HC 210 R3	2,65
SKL 55 T	55	169	145	60	22	42	71,4	76,0	130	104	17	95	35	26	63,5	M6	43,6	102	HC 211 R3	4,60
SKL 60 T	60	194	146	64	22	42	77,8	84,0	130	119	19	102	35	32	64,0	M6	46,8	102	HC 212 R3	4,84
SKL 70 T	70	224	167	70	26	46	66,1	96,0	151	137	21	121	41	32	70,0	M6	44,6	111	HC 214 R3	7,20
SKL 75 T	75	214	166	70	25	50	67,1	100,0	151	135	20	120	41	35	70,0	M6	45,6	110	HC 215 R3	7,05
SKL 80 T	80	235	184	70	26	51	71,0	108,0	165	140	21	121	41	32	70,0	M6	47,6	111	HC 216 R3	8,40