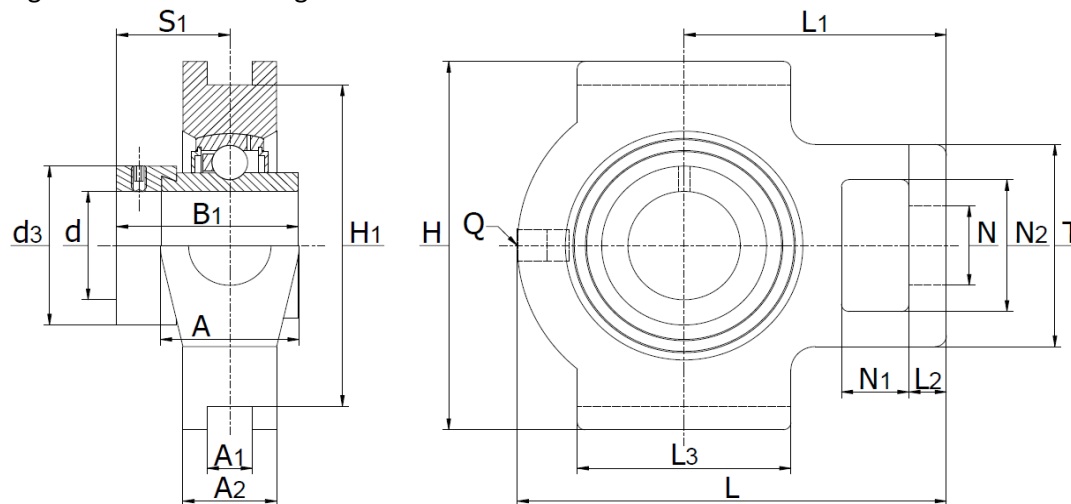




SKL .. A - Take-Up Housing (RTUE..)

cast iron housing, radial insert ball bearing with eccentric locking collar.



Part No.	d mm	Dimensions (mm)																		Bearing No.	Weight (kg)
		L	H	A	A ₁	A ₂	B ₁	d _{3max}	H ₁	L ₁	L ₂	L ₃	N	N ₁	N ₂	Q	S ₁	T			
SKL 20 A	20	94,5	90	37	12	25	43,7	33,0	76	60	9	50	19	18	32,0	M6	26,6	51	HC 204	0,87	
SKL 25 A	25	98,5	90	37	12	25	44,4	37,5	76	62	10	50	19	18	32,0	M6	26,9	51	HC 205	0,91	
SKL 30 A	30	114,5	102	37	12	25	48,4	44,0	89	70	10	57	22	18	36,5	M6	30,1	56	HC 206	1,24	
SKL 35 A	35	131,5	102	40	12	30	51,5	51,0	89	80	13	63	22	18	36,5	M6	32,3	64	HC 207	1,80	
SKL 40 A	40	141,0	115	50	16	35	56,3	60,3	102	88	16	82	29	20	49,0	M6	34,9	82	HC 208	2,52	
SKL 45 A	45	141,0	115	50	16	35	56,3	63,0	102	88	16	82	29	20	49,0	M6	34,9	82	HC 209	2,61	
SKL 50 A	50	148,0	115	50	16	35	62,7	69,0	102	90	16	85	29	20	49,0	M6	38,1	83	HC 210	2,65	
SKL 55 A	55	169,0	145	60	22	42	71,4	76,0	130	104	17	95	35	26	63,5	M6	43,6	102	HC 211	4,60	
SKL 60 A	60	186,0	146	60	22	44	77,8	84,0	130	118	19	100	35	32	63,5	M6	46,8	102	HC 212	4,84	
SKL 65 A	65	214,0	166	70	25	50	66,1	96,0	151	135	20	120	41	35	70,0	M6	44,6	110	HC 213	7,46	
SKL 70 A	70	214,0	166	70	25	50	66,1	96,0	151	135	20	120	41	35	70,0	M6	44,6	110	HC 214	7,20	
SKL 75 A	75	214,0	166	70	25	50	67,1	100,0	151	135	20	120	41	35	70,0	M6	45,6	110	HC 215	7,05	
SKL 80 A	80	230,0	184	70	28	50	71,0	108,0	165	140	20	120	41	35	70,0	M6	47,6	110	HC 216	8,40	
SKL 90 A	90	275,0	215	80	28	55	69,5	118,0	190	170	30	140	47	40	80,0	M6	46,5	130	HC 218	11,57	
SKL 100 A	100	298,0	240	102	28	64	75,0	132,0	214	183	30	170	53	42	80,0	M6	49,5	130	HC 220	14,55	
SKL 120 A*	120	345,0	285	100	32	70	81,0	152,0	255	210	35	190	55	45	95,0	M6	52,5	150	HC 224	22,43	

*no grease bore, lubricated for life