

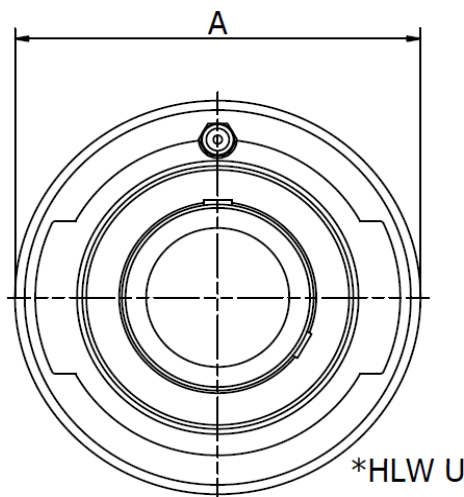


HLW 200 Series - Cylindrical units

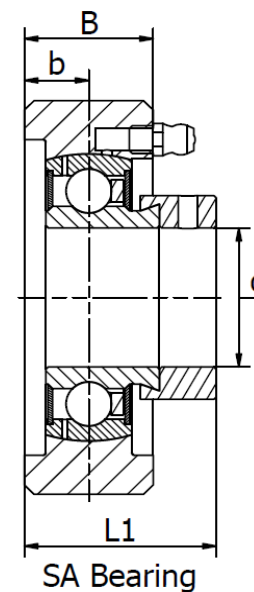
Cast iron housing. Temperature range -30°C to +110°C



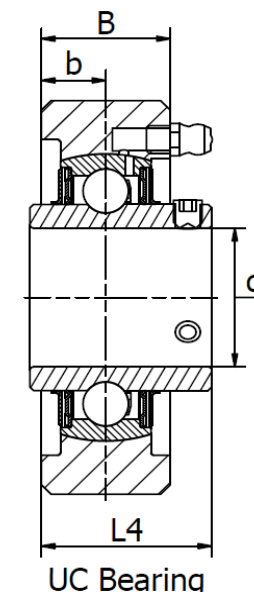
*HLW U



*HLW U



SA Bearing



UC Bearing

Product No.		Dimensions (mm)						Bearing No.		Housing No.	Weight (kg)
Eccentric Locking	Set Screw Locking	d	A	B	b	L1	L4	SA	UC		
HLW 20	HLW 20 U (UCC 204)	20	72	20	10,0	33,5	28,3	SA 204	UC 204	HLW 20 O.L	0,5
HLW 25	HLW 25 U (UCC 205)	25	80	22	11,0	34,5	30,7	SA 205	UC 205	HLW 25 O.L	0,7
HLW 30	HLW 30 U (UCC 206)	30	85	27	13,5	40,3	35,7	SA 206	UC 206	HLW 30 O.L	0,8
HLW 35	HLW 35 U (UCC 207)	35	90	28	14,0	43,5	39,4	SA 207	UC 207	HLW 35 O.L	0,9
HLW 40	HLW 40 U (UCC 208)	40	100	30	15,0	47,8	45,2	SA 208	UC 208	HLW 40 O.L	1,3
HLW 45	HLW 45 U (UCC 209)	45	110	31	15,5	48,3	45,7	SA 209	UC 209	HLW 45 O.L	1,6
HLW 50	HLW 50 U (UCC 210)	50	120	33	16,5	49,3	49,1	SA 210	UC 210	HLW 50 O.L	2,0
HLW 55	HLW 55 U (UCC 211)	55	125	35	17,5	53,9	50,9	SA 211	UC 211	HLW 55 O.L	2,2
HLW 60	HLW 60 U (UCC 212)	60	130	38	19,0	58,6	58,7	SA 212	UC 212	HLW 60 O.L	2,6

Also available with SB, HC and UK bearing inserts.