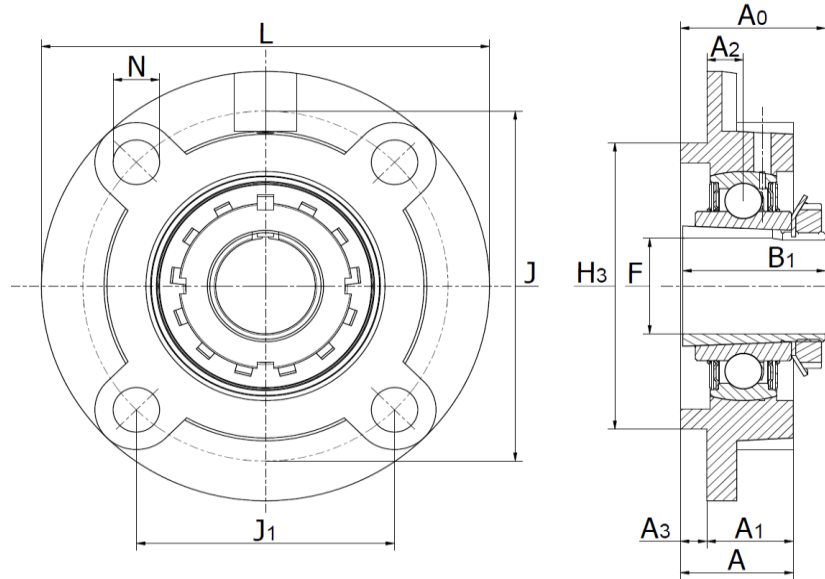




## UKFC 200 Series

Round flanged units cast housing w/spigot joint, for adapter sleeves (not included) or a tapered shaft



Product No.	Shaft Ø	Dimensions (mm)													Bolt Size	Bearing	Adapter Sleeve	Weight (kg)
		L	J	J <sub>1</sub>	A <sub>2</sub>	N	A <sub>3</sub>	A <sub>1</sub>	A <sub>1c</sub>	A	H <sub>3</sub>	A <sub>0</sub>	B <sub>1</sub>	F <sub>min</sub>				
UKFC 205	20	115	90	63,6	10	12	6	21	22	27	70	35,5	35	30	M10	UK 205	H2305	1,0
UKFC 206	25	125	100	70,7	10	12	8	23	24,5	31	80	39	38	36	M10	UK 206	H2306	1,3
UKFC 207	30	135	110	77,8	11	14	8	26	26	34	90	42,5	43	40	M12	UK 207	H2307	1,7
UKFC 208	35	145	120	84,9	11	14	10	26	27,5	36	100	46,5	46	46	M12	UK 208	H2308	2,1
UKFC 209	40	160	132	93,3	10	16	12	26	28	38	105	48,5	50	52	M14	UK 209	H2309	2,8
UKFC 210	45	165	138	97,6	10	16	12	28	29	40	110	50	55	57	M14	UK 210	H2310	3,1
UKFC 211	50	185	150	106,1	13	19	12	31	32,5	43	125	54,5	59	64	M16	UK 211	H2311	4,2
UKFC 212	55	195	160	113,1	17	19	12	36	38	48	135	61	62	69	M16	UK 212	H2312	5,0
UKFC 213	60	205	170	120,2	16	19	14	36	38	50	145	64	65	74	M16	UK 213	H2313	6,0
UKFC 215	65	220	184	130,1	18	19	16	40	42	56	160	71	73	84	M16	UK 215	H2315	7,7
UKFC 216	70	240	200	141,4	18	23	16	42	43	58	170	73,5	78	90	M20	UK 216	H2316	9,5
UKFC 217	75	250	208	147,1	18	23	18	45	45,5	63	180	77	82	95	M20	UK 217	H2317	11,0
UKFC 218	80	265	220	155,6	22	23	18	50	50	68	190	81,5	86	102	M20	UK 218	H2318	15,0