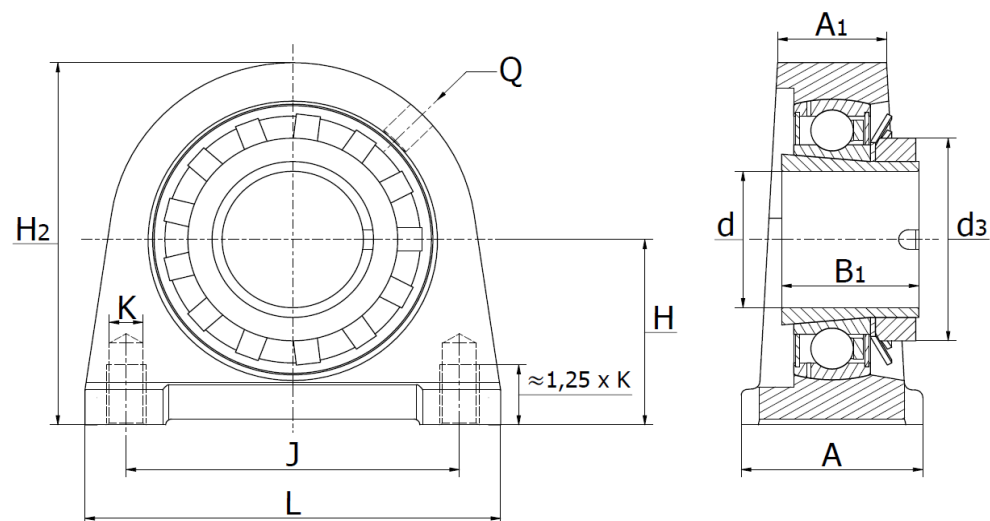
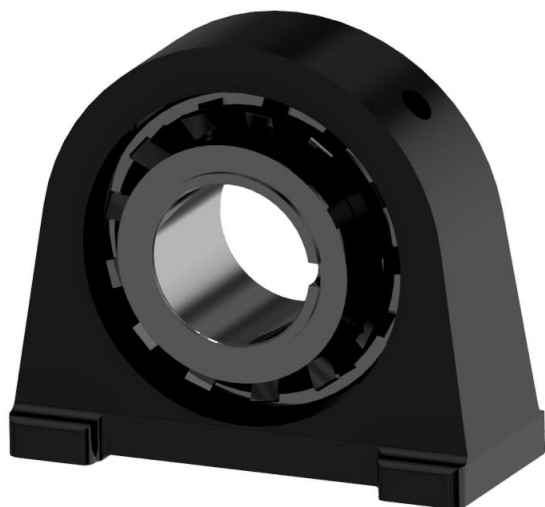




## SWG .. K Series

cast iron housing, radial insert ball bearing for adapter sleeve (not included).



Part No.	d	Dimensions (mm)										Bearing No.	Weight (kg)
	mm	L	H <sub>2</sub>	A	A <sub>1</sub>	B <sub>1</sub>	d <sub>3 max</sub>	H	J	K	Q		
SWG 25 K	20	70	70,0	36	21	35	38	36,5	50,8	M10	Rp 1/8"	UK 205 + H2305	0,60
SWG 30 K	25	98	82,0	40	25	38	45	42,9	76,2	M10	Rp 1/8"	UK 206 + H2306	1,05
SWG 35 K	30	103	93,0	45	27	43	52	47,6	82,6	M10	Rp 1/8"	UK 207 + H2307	1,44
SWG 40 K	35	116	99,0	48	30	46	58	49,2	88,9	M12	Rp 1/8"	UK 208 + H2308	1,84
SWG 45 K	40	120	107,0	48	32	50	65	54,0	95,3	M12	Rp 1/8"	UK 209 + H2309	2,14
SWG 50 K	45	135	115,0	54	34	55	70	57,2	101,6	M16	Rp 1/8"	UK 210 + H2310	2,79
SWG 55 K	50	150	124,5	60	35	59	75	63,5	118,0	M16	Rp 1/8"	UK 211 + H2311	2,91
SWG 60 K	55	150	140,0	60	42	62	80	69,9	118,0	M16	Rp 1/8"	UK 212 + H2312	4,10