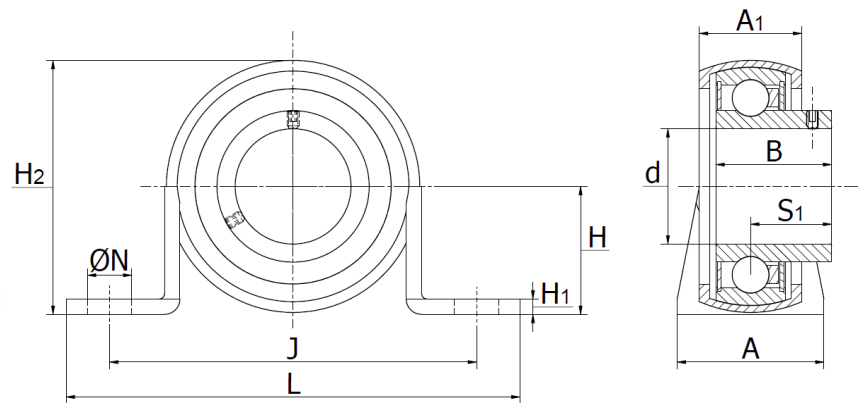
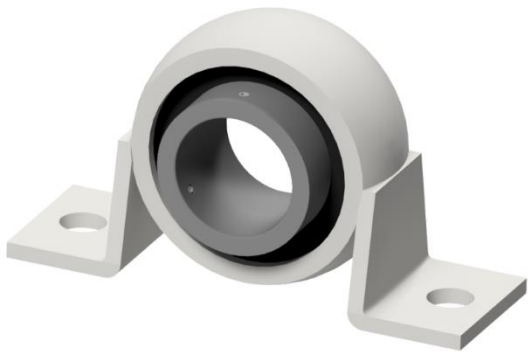




## BS .. S Series (PBY)

zinc plated sheet steel housing, grub screw locking



Part No.	d mm	Dimensions (mm)										Bearing No.	Housing No.	Weight (kg)
		L	H <sub>2</sub>	A	A <sub>1</sub>	B	H	H <sub>1</sub>	J	N	S <sub>1</sub>			
BS 12 S	12	85,7	43,2	25,4	18,4	22	22,2	2,6	68	9,5	16,0	SB 201	PP 201	0,15
BS 15 S	15	85,7	43,2	25,4	18,4	22	22,2	2,6	68	9,5	16,0	SB 202	PP 202	0,15
BS 17 S	17	85,7	43,2	25,4	18,4	22	22,2	2,6	68	9,5	16,0	SB 203	PP 203	0,15
BS 20 S	20	98,4	50,1	31,8	22,3	25	25,4	3,3	76	9,5	18,0	SB 204	PP 204	0,22
BS 25 S	25	108,0	56,5	31,8	23,5	27	28,6	4,0	86	11,5	19,5	SB 205	PP 205	0,26
BS 30 S	30	117,5	66,1	38,0	26,5	30	33,3	4,0	95	11,5	21,0	SB 206	PP 206	0,40
BS 35 S	35	129,0	78,0	42,0	30,5	34	39,7	4,6	106	11,5	25,5	SB 207	PP 207	0,60
BS 40 S	40	148,0	86,0	43,0	29,0	36	43,5	5,0	120	14,0	25,3	SB 208	PP 208	0,80