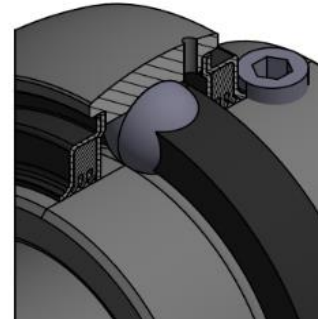
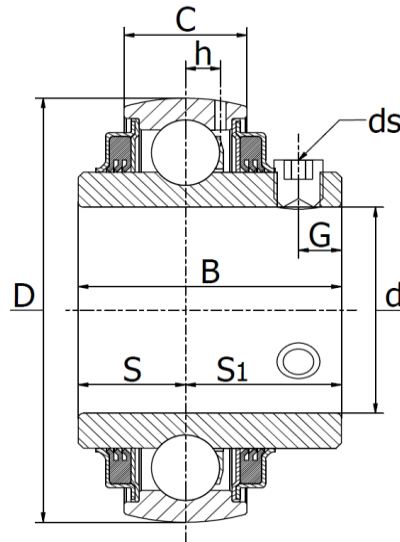




UC 200 R3 Series (GYE..KTTB/GYE..KPPB-3)

Radial insert ball bearings, tripple seals, location by set screws, universal regreaseable acc. to common european and japanese standards, lithium based NLGI 2/3 grease.

Temperature range -30°C to +110°C.



Bearing No.	Dimensions(mm)									Basic load rating (N)		Weight (kg)
	d	D	B	C	S	S ₁	G	h	ds	Dynamic Cr	Static Cor	
UC 204 R3	20	47	31,0	16	12,7	18,3	4,7	4,4	M6X0,75	12800	6650	0,18
UC 205 R3	25	52	34,0	17	14,3	19,7	5,5	4,3	M6X0,75	14000	7880	0,21
UC 206 R3	30	62	38,1	19	15,9	22,2	5,5	5,0	M6X0,75	19500	11200	0,32
UC 207 R3	35	72	42,9	20	17,5	25,4	6,5	5,8	M8X1	25700	15200	0,47
UC 208 R3	40	80	49,2	21	19,0	30,2	8,0	6,3	M8X1	29600	18200	0,64
UC 209 R3	45	85	49,2	22	19,0	30,2	8,0	6,8	M8X1	31850	20800	0,68
UC 210 R3	50	90	51,6	23	19,0	32,6	9,0	6,5	M10X1,25	35100	23200	0,80
UC 211 R3	55	100	55,6	25	22,2	33,4	9,0	7,2	M10X1,25	43550	29200	1,12
UC 212 R3	60	110	65,1	27	25,4	39,7	10,5	8,2	M10X1,25	47800	32800	1,53
UC 213 R3	65	120	65,1	28	25,4	39,7	12,0	8,0	M10X1,25	57200	40000	1,86

This seal type consists of a metal cap and synthetic rubber seals, which are baked together to form a single seal. The lip layers are of triple construction and outside matters, such as dust, water, etc. are shut out. This sealing system shows its outstanding function under bad conditions.

The larger grease reservoirs provide longer relubrication intervals.