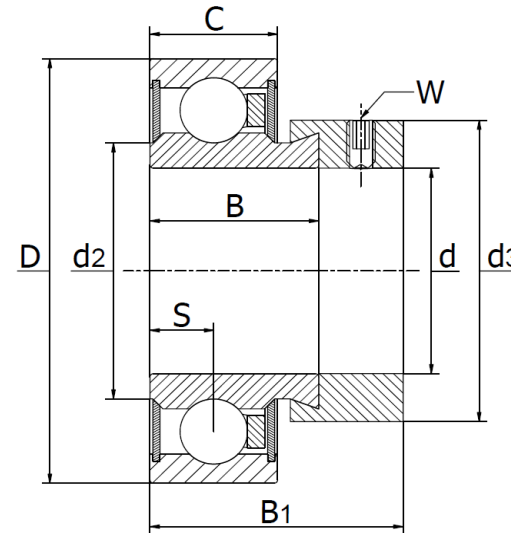




RAE .. NPP.FA106 (CSA) - Radial insert ball bearings

Cylindrical outer ring, location by eccentric locking collar, P seals on both sides, lithium based NLGI 2/3 grease. Temperature range -30°C to +110°C.



Type	Dimensions									Load rating (N)		Mass kg
	d	D	B ₁	B	C	d ₂	d _{3 max}	S	W	C _r (dynamic)	C _{0r} (static)	
RAE12NPP.FA106	12	40	28,6	19,0	12	23,0	28,0	6,5	M6	9800	4750	0,13
RAE15NPP.FA106	15	40	28,6	19,0	12	23,0	28,0	6,5	M6	9800	4750	0,12
RAE17NPP.FA106	17	40	28,6	19,0	12	23,0	28,0	6,5	M6	9800	4750	0,11
RAE20NPP.FA106	20	47	31,0	21,4	14	26,9	33,0	7,5	M6	12800	6600	0,17
RAE25NPP.FA106	25	52	31,0	21,4	15	30,5	37,5	7,5	M6	14000	7800	0,20
RAE30NPP.FA106	30	62	35,8	23,8	18	37,4	44,0	9,0	M8	19500	11300	0,33
RAE35NPP.FA106	35	72	39,0	25,4	19	44,6	51,0	9,5	M10	25500	15300	0,49
RAE40NPP.FA106	40	80	43,8	30,2	21	49,4	58,0	11,0	M10	32500	19800	0,64
RAE45NPP.FA106	45	85	43,8	30,2	22	54,5	63,0	11,0	M10	32500	20400	0,72
RAE50NPP.FA106	50	90	43,8	30,2	22	59,4	69,0	11,0	M10	35000	23200	0,79
RAE60NPP.FA106	60	110	53,1	37,1	24	72,0	84,0	13,5	M10	52000	36000	1,43