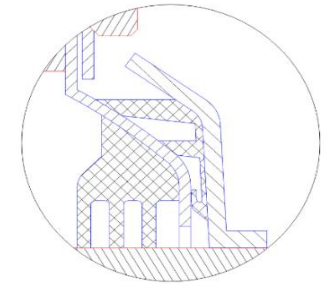
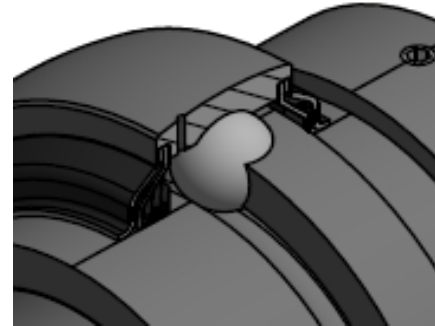
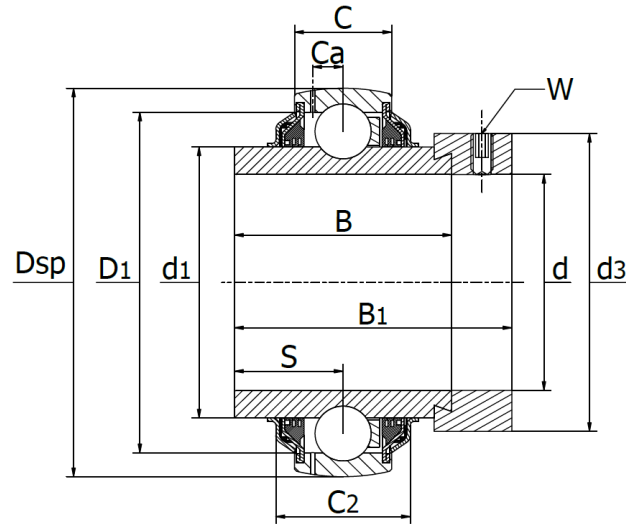




## HC 200 R6 Series

Eccentric Collar Lock with R6 seals, triple inner rubber lips, slinger with tripple rubber lips, universal regreaseable acc. to common european and japanese standards, lithium based NLGI 2/3 grease. Temperature range -30°C to +110°C.



Bearing No.	Dimensions (mm)												Basic load rating (N)		Weight (kg)
	d	D <sub>SP</sub>	B <sub>1</sub>	B	C	C <sub>2</sub>	Ca	D <sub>1</sub>	d <sub>1</sub>	d <sub>3 max</sub>	S	W	Cr	Cor	
HC 204 R6	20	47	43,7	34,1	14	16,6	3,7	37,4	27,6	33,0	17,1	M6	12800	6600	0,20
HC 205 R6	25	52	44,4	34,9	15	20,2	3,9	42,5	33,8	37,5	17,5	M6	14000	7800	0,25
HC 206 R6	30	62	48,4	36,5	18	20,7	5,0	52,0	40,2	44,0	18,3	M8	19500	11300	0,39
HC 207 R6	35	72	51,1	37,7	19	22,4	5,7	60,3	46,8	51,0	18,8	M10	25500	15300	0,56
HC 208 R6	40	80	56,3	42,9	21	28,1	6,2	68,3	52,3	60,3	21,4	M10	32500	19800	0,77
HC 209 R6	45	85	56,5	42,9	22	26,4	6,4	72,3	57,9	63,0	21,4	M10	32500	20400	0,86
HC 210 R6	50	90	62,7	49,2	22	26,4	6,9	77,3	62,8	69,0	24,6	M10	35000	23200	1,06
HC 211 R6	55	100	71,4	55,5	25	29,0	7,0	85,9	69,8	76,0	27,8	M10	43500	29000	1,42
HC 212 R6	60	110	77,8	61,9	24	29,0	7,6	94,5	76,5	84,0	31,0	M10	52000	36000	1,84