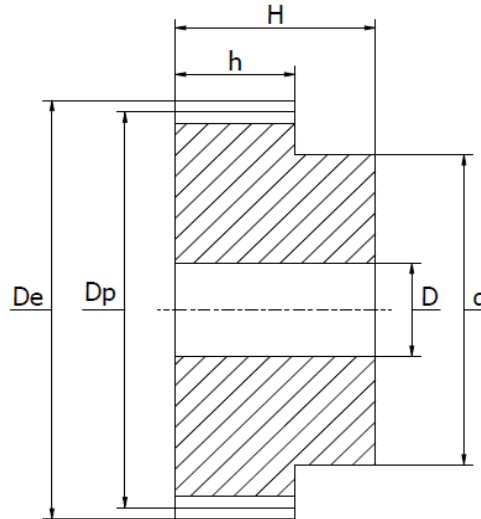


## M8 Module - Spur Gears

with hub, pressure angle 20°, material C45E.



Item No.	Teeth	Dimensions (mm)					
	Z	De	Dp	d	D	h	H
<b>M8 Z12</b>	12	112	96	56	20	80	110
<b>M8 Z15</b>	15	136	120	90	25	80	110
<b>M8 Z18</b>	18	160	144	100	25	80	110
<b>M8 Z20</b>	20	176	160	120	30	80	110
<b>M8 Z24</b>	24	208	192	150	30	80	110
<b>M8 Z25</b>	25	216	200	150	30	80	110
<b>M8 Z30</b>	30	256	240	190	30	80	110