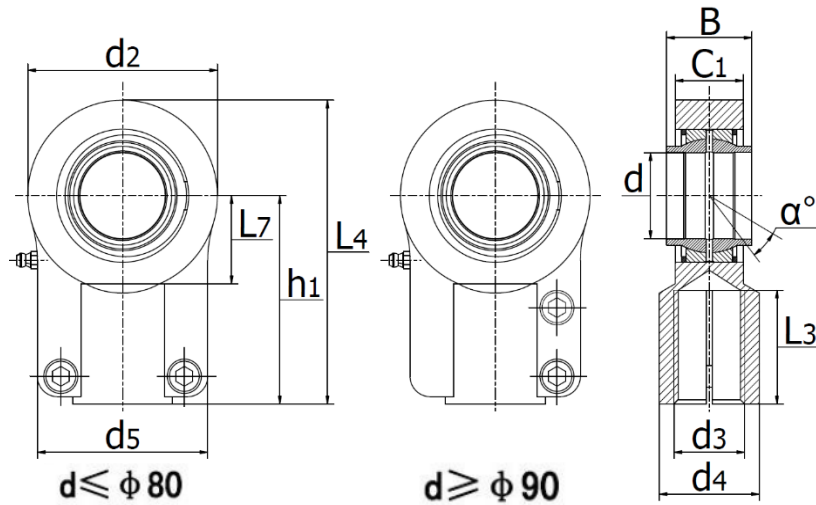


## GIHNRK...-LO - Hydraulic rod ends

with thread clamping device, requiring maintenance, to DIN ISO 12 240-4, right hand thread. (GIHN-K..LO / TAPR...CE)



Rod end housing with right-hand female thread.

Made up of a radial spherical plain bearing GE..LO and rod end housing.

With locking slot and nut.

Rod end housing with a lubricating hole or grease nipple.

Relubrication not possible for the size marked with \*.

Part No.	Dimensions (mm)											Locking Bolts	Locking Torque (Nm)	Load ratings (kN)		Weight (kg)	
	d	d <sub>3</sub>	d <sub>4</sub>	L <sub>3 min</sub>	B	C <sub>1</sub>	d <sub>2</sub>	L <sub>7 min</sub>	h <sub>1</sub>	L <sub>4</sub>	d <sub>5</sub>			C <sub>2</sub>	dyn. C		stat. C0
GIHNRK12-LO*	12	M12x1,25	16,5	17	12	11	32	14	38	54	32	11	M5X16	6	10,8	24,5	0,1
GIHNRK16-LO	16	M14x1,5	21	19	16	14	40	18	44	64	40	14	M6X14	10	17,6	36,5	0,2
GIHNRK20-LO	20	M16x1,5	25	23	20	17	47	22	52	77	47	17	M8X20	25	30	48	0,4
GIHNRK25-LO	25	M20x1,5	30	29	25	22	58	27	65	96	54	19	M8X20	25	48	78	0,66
GIHNRK30-LO	30	M24x2,0	34	35	28	22	64	34	75	109	56	-	M8X25	25	62	105	0,9
GIHNRK32-LO	32	M27x2,0	38	37	32	28	71	32	80	118,5	66	22	M10X25	49	67	114	1,2
GIHNRK40-LO	40	M33x2,0	47	46	40	33	90	41	97	146	80	26	M10X30	49	100	204	2,1
GIHNRK50-LO	50	M42x2,0	58	57	50	41	109	50	120	179,5	96	32	M12X35	86	156	310	4,4
GIHNRK63-LO	63	M48x2,0	70	64	63	53	136	62	140	213	114	38	M16X40	210	255	430	7,6
GIHNRK70-LO	70	M56x2,0	80	76	70	57	155	70	160	245	135	42	M16X40	210	315	540	9,5
GIHNRK80-LO	80	M64x3,0	90	86	80	67	170	78	180	270,5	148	48	M20X50	410	400	695	14,5
GIHNRK90-LO	90	M72x3,0	100	91	90	72	185	85	195	296	160	52	M20X60	410	490	750	17
GIHNRK100-LO	100	M80x3,0	110	96	100	84	210	98	210	322	178	62	M24X60	710	610	1060	28
GIHNRK110-LO	110	M90x3,0	125	106	110	88	235	105	235	364	190	62	M24X60	710	655	1200	32
GIHNRK125-LO	125	M100x3,0	135	113	125	102	265	120	260	405	200	72	M24X70	710	950	1430	43
GIHNRK160-LO	160	M125x4,0	165	126	160	130	326	150	310	488	250	82	M24X80	710	1370	2200	82,5