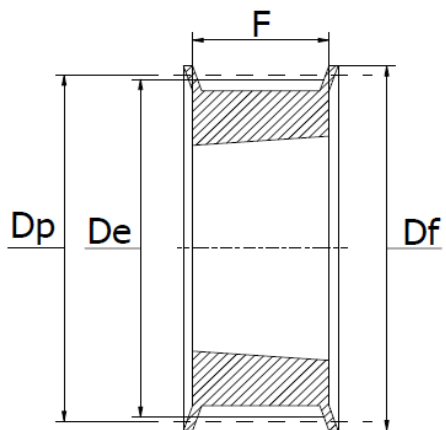


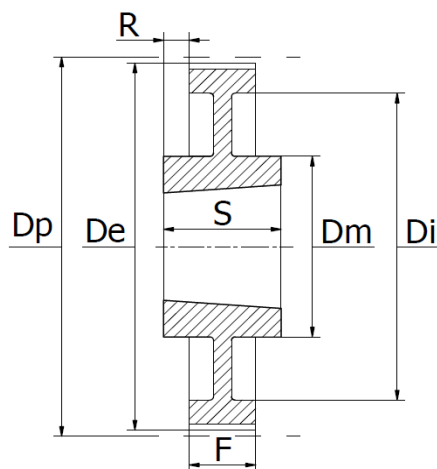


HTD Timing belt pulleys for taper bushes

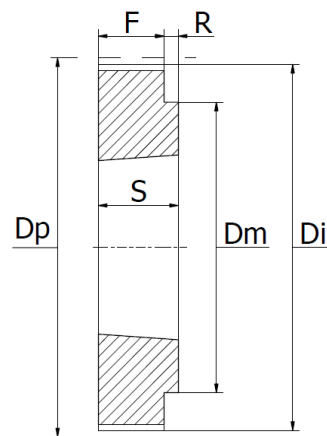
Material Steel: C45 E UNI EN 10083-1. Material Cast iron: EN-GJL-250 UNI EN 1561. Contact us for solid versions with bore.



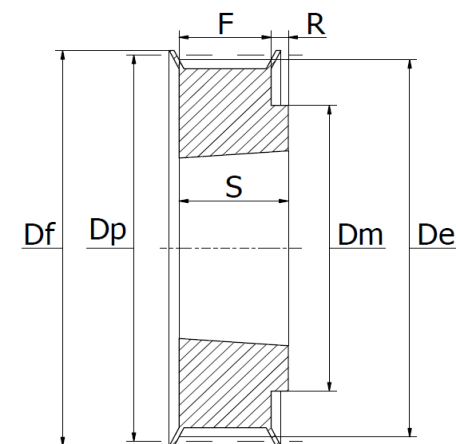
TYPE 3F



TYPE 7A



TYPE 8



TYPE 8F

Part No.	Material	Type	Belt width in mm	Taper bush	Ø Max.	Dimensions (mm)							Weight (kg)	
						Dp	De	Df	Dm	Di	F	S		R
HTD 34 5M 15	Steel	3F	15	1108	25	54,11	52,97	57	-	-	22	22	-	0,19
HTD 36 5M 15	Steel	3F	15	1108	25	57,30	56,15	60	-	-	22	22	-	0,20
HTD 38 5M 15	Steel	3F	15	1108	25	60,48	59,34	66	-	-	22	22	-	0,26
HTD 40 5M 15	Steel	3F	15	1108	25	63,66	62,52	70	-	-	22	22	-	0,31
HTD 44 5M 15	Steel	3F	15	1108	25	70,03	68,89	75	-	-	22	22	-	0,41
HTD 48 5M 15	Steel	8F	15	1210	32	76,39	75,25	83	59	-	22	25	3	0,45
HTD 56 5M 15	Steel	8F	15	1210	32	89,13	87,39	93	70	-	22	25	3	0,75
HTD 64 5M 15	Steel	8F	15	1210	32	101,86	100,72	106	80	-	22	25	3	1,20
HTD 72 5M 15	Steel	8	15	1610	42	114,59	113,45	-	92	-	22	25	3	1,35
HTD 80 5M 15	Steel	8	15	1610	42	127,32	126,18	-	92	-	22	25	3	1,73
HTD 90 5M 15	Steel	8	15	1610	42	143,10	142,10	-	92	-	22	25	3	2,29
HTD 112 5M 15	Steel	8	15	2012	50	178,25	177,11	-	110	-	20	32	12	3,71
HTD 136 5M 15	Steel	7A	15	2012	50	215,45	215,31	-	110	199	20	32	6	3,08