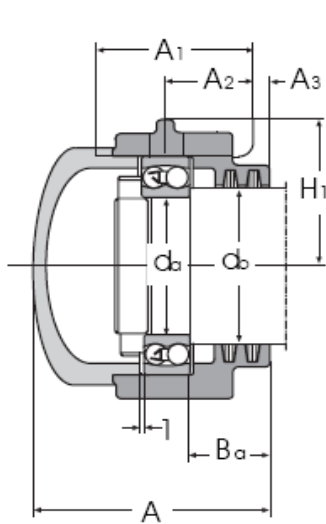


TVN 300 Series - Pillow Block Housings for Conveyor Trolleys

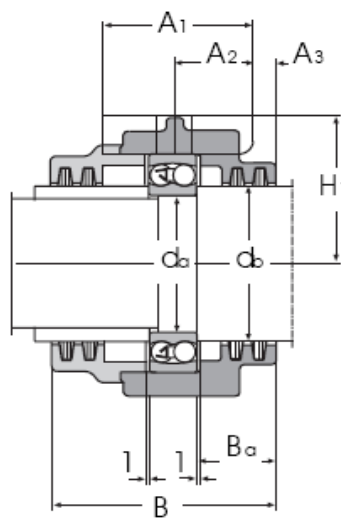
Series TVN 3.. WA (end shaft) / Series TVN 3.. WB (through shaft). Incl. felt-seal.

For self aligning ball bearing series 13 - 23 and spherical roller bearing 223 with cylindrical bore.

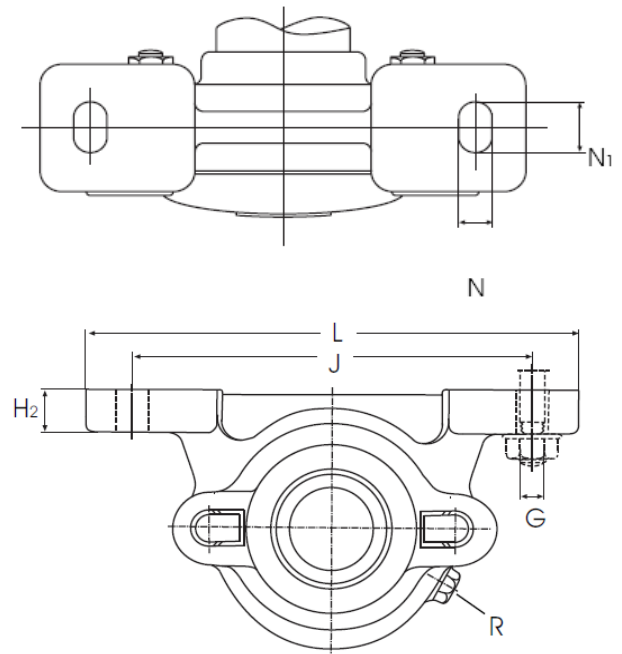
Universal housing for all bearing types, TVN 300 A & B versions possible with locating rings.



Type WA/A



Type WB/B



| Item Number | Dimensions (mm) | | | | | | | | | | | | | | | Weight | |
|-------------|-----------------|----|------|-----|----------------|----------------|----------------|----|----------------|----------------|----------------|-----|-----|------|----------------|--------|------|
| WA + WB | da | db | A | B | A ₁ | A ₂ | A ₃ | N | N ₁ | H ₁ | H ₂ | J | L | G | B _a | R | (kg) |
| TVN 304 WA | 20 | 25 | 63 | - | 45 | 25 | 7 | 15 | 22 | 40 | 16 | 130 | 170 | M 12 | 21,0 | M6 | 2,0 |
| TVN 304 WB | 20 | 25 | - | 71 | 45 | 25 | 7 | 15 | 22 | 40 | 16 | 130 | 170 | M 12 | 21,0 | M6 | 2,1 |
| TVN 305 WA | 25 | 30 | 71 | - | 52 | 30 | 7 | 15 | 22 | 50 | 16 | 150 | 190 | M 12 | 23,0 | M6 | 2,6 |
| TVN 305 WB | 25 | 30 | - | 76 | 52 | 30 | 7 | 15 | 22 | 50 | 16 | 150 | 190 | M 12 | 23,0 | M6 | 2,8 |
| TVN 306 WA | 30 | 40 | 77 | - | 52 | 30 | 8 | 15 | 22 | 50 | 18 | 150 | 190 | M 12 | 23,5 | M6 | 3,0 |
| TVN 306 WB | 30 | 40 | - | 78 | 52 | 30 | 8 | 15 | 22 | 50 | 18 | 150 | 190 | M 12 | 23,5 | M6 | 3,1 |
| TVN 307 WA | 35 | 45 | 86 | - | 60 | 35 | 8 | 15 | 22 | 60 | 18 | 170 | 210 | M 12 | 26,5 | M6 | 4,3 |
| TVN 307 WB | 35 | 45 | - | 92 | 60 | 35 | 8 | 15 | 22 | 60 | 18 | 170 | 210 | M 12 | 26,5 | M6 | 4,4 |
| TVN 308 WA | 40 | 50 | 79,5 | - | 60 | 35 | 8 | 14 | 23 | 60 | 20 | 172 | 210 | M 12 | 27,5 | M6 | 4,8 |
| TVN 308 WB | 40 | 50 | - | 94 | 60 | 35 | 8 | 14 | 23 | 60 | 20 | 172 | 210 | M 12 | 27,5 | M6 | 4,9 |
| TVN 309 WA | 45 | 55 | 95 | - | 70 | 40 | 8 | 20 | 32 | 70 | 23 | 210 | 270 | M 16 | 27,0 | M6 | 6,4 |
| TVN 309 WB | 45 | 55 | - | 100 | 70 | 40 | 8 | 20 | 32 | 70 | 23 | 210 | 270 | M 16 | 27,0 | M6 | 6,5 |
| TVN 310 WA | 50 | 60 | 102 | - | 70 | 40 | 10 | 20 | 32 | 70 | 23 | 210 | 270 | M 16 | 30,0 | M6 | 6,9 |
| TVN 310 WB | 50 | 60 | - | 105 | 70 | 40 | 10 | 20 | 32 | 70 | 23 | 210 | 270 | M 16 | 30,0 | M6 | 7,1 |
| TVN 311 WA | 55 | 65 | 110 | - | 80 | 45 | 10 | 20 | 32 | 80 | 25 | 230 | 290 | M 16 | 30,5 | M6 | 9,3 |
| TVN 311 WB | 55 | 65 | - | 115 | 80 | 45 | 10 | 20 | 32 | 80 | 25 | 230 | 290 | M 16 | 30,5 | M6 | 9,5 |
| TVN 312 WA | 60 | 70 | 115 | - | 80 | 45 | 10 | 20 | 32 | 80 | 25 | 230 | 290 | M 16 | 31,0 | M6 | 10,5 |
| TVN 312 WB | 60 | 70 | - | 117 | 80 | 45 | 10 | 20 | 32 | 80 | 25 | 230 | 290 | M 16 | 31,0 | M6 | 11,0 |
| TVN 313 WA | 65 | 75 | 122 | - | 90 | 50 | 10 | 25 | 32 | 95 | 28 | 260 | 330 | M 20 | 35,0 | M6 | 13,5 |
| TVN 313 WB | 65 | 75 | - | 127 | 90 | 50 | 10 | 25 | 32 | 95 | 28 | 260 | 330 | M 20 | 35,0 | M6 | 14,5 |
| TVN 314 WA | 70 | 80 | 126 | - | 90 | 50 | 10 | 25 | 32 | 95 | 28 | 260 | 330 | M 20 | 35,5 | M6 | 14,0 |
| TVN 314 WB | 70 | 80 | - | 129 | 90 | 50 | 10 | 25 | 32 | 95 | 28 | 260 | 330 | M 20 | 35,5 | M6 | 14,5 |
| TVN 315 WA | 75 | 85 | 136 | - | 100 | 55 | 10 | 25 | 32 | 100 | 30 | 290 | 360 | M 20 | 38,5 | M6 | 18,5 |
| TVN 315 WB | 75 | 85 | - | 139 | 100 | 55 | 10 | 25 | 32 | 100 | 30 | 290 | 360 | M 20 | 38,5 | M6 | 19,5 |