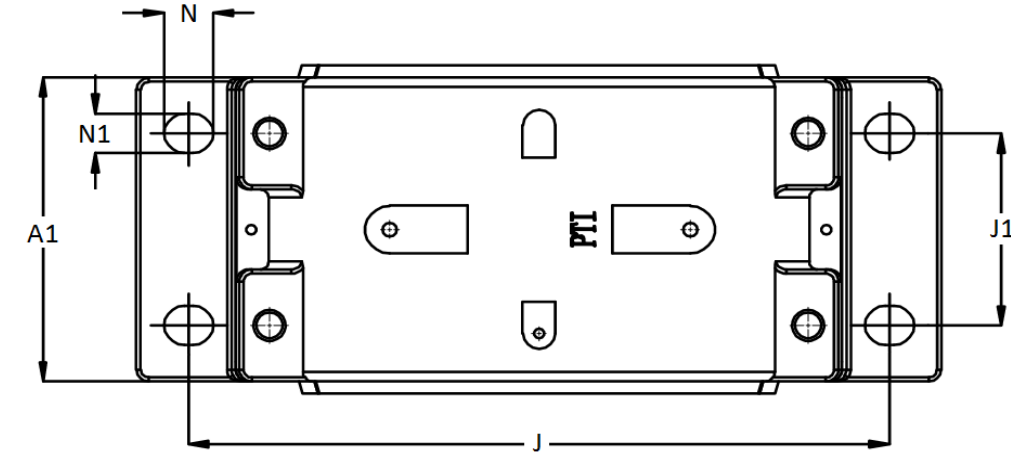
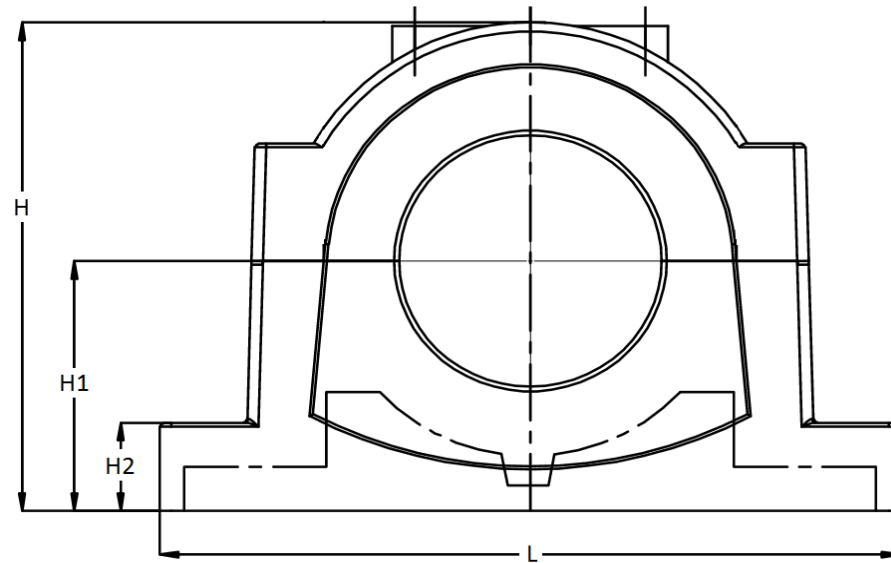
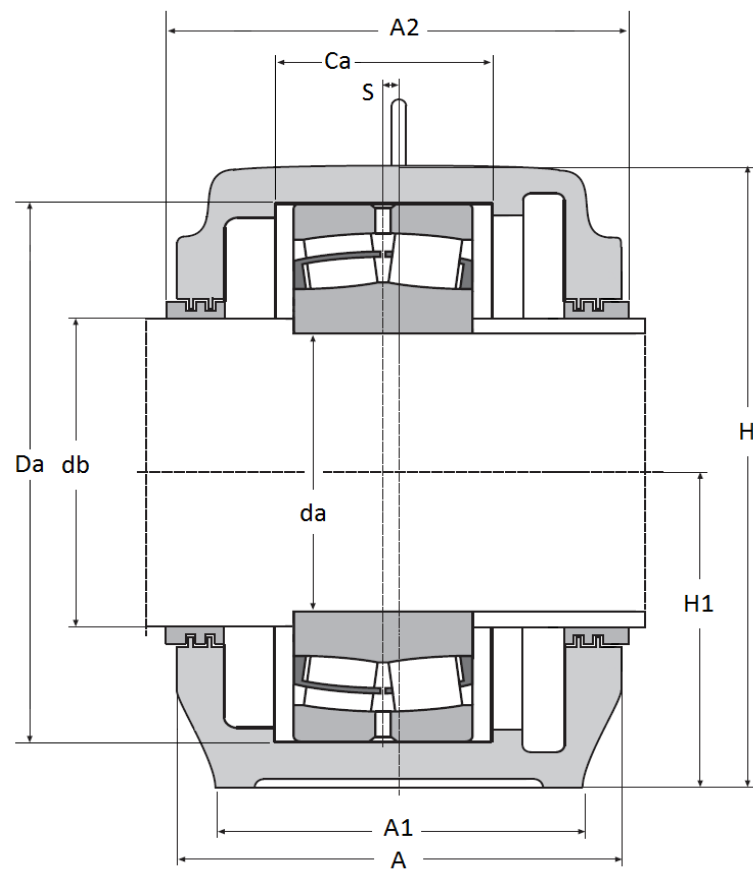


### SD 3100 G Series - Split Plummer Block Housings (SNL 3100 G)

for spherical roller bearings on a cylindrical shaft, labyrinth seal, cast iron GG 20, incl. eye bolt.



Housing No.	Shaft		Dimensions (mm)														Mounting Bolt	Weight (kg)	Labyrinth Seals	Bearing	Fixing Rings	End cover	O-Ring $\varnothing$ * Length	Grease Qty First filling
	da	db	Da	Ca	A	A1	A2	H	H1	H2	L	J	J1	N	N1	S								
SD 3134 G	170	180	280	108	230	180	240	333	170	70	510	430	100	34	28	14	24	70	TS 40	23134	2 x FR 280-10	ETS40	4 x 620	1,1 kg
SD 3136 G	180	200	300	116	240	190	250	353	180	75	530	450	110	34	28	15	24	78	TS 44	23136	2 x FR 300-10	ETS44	4 x 680	1,4 kg
SD 3138 G	190	200	320	124	260	210	270	375	190	80	560	480	120	34	28	10	24	98	TS 44	23138	2 x FR 320-10	ETS44	4 x 680	1,8 kg
SD 3140 G	200	220	340	132	280	230	290	411	210	85	610	510	130	42	35	10	30	123	TS 48	23140	2 x FR 340-10	ETS48	4 x 750	2,3 kg
SD 3144 G	220	240	370	140	290	240	300	434	220	90	640	540	140	42	35	12	30	138	TS 52	23144	2 x FR 370-10	ETS52	4 x 810	2,7 kg
SD 3148 G	240	260	400	148	310	260	315	474	240	95	700	600	150	42	35	12	30	187	TS 56	23148	2 x FR 400-10	ETS56	4 x 870	3,4 kg
SD 3152 G	260	280	440	164	320	280	330	516	260	100	770	650	160	50	42	13	36	221	TS 60	23152	2 x FR 440-10	ETS60	4 x 940	4,3 kg
SD 3156 G	280	300	460	166	320	280	330	551	280	105	790	670	160	50	42	16	36	252	TS 64	23156	2 x FR 460-10	ETS64	4 x 1000	4,4 kg
SD 3160 G	300	320	500	180	350	310	360	591	300	110	830	710	190	50	42	22	36	301	TS 68	23160	2 x FR 500-10	ETS68	4 x 1050	6,2 kg
SD 3164 G	320	340	540	196	370	330	380	631	320	115	880	750	200	50	42	23	36	339	TS 72	23164	2 x FR 540-10	ETS72	4 x 1090	7,7 kg
SD 3168 G	340	360	580	210	400	360	410	675	340	120	950	810	220	50	42	24	36	415	TS 76	23168	2 x FR580-10	ETS76	4 x 1150	9,4 kg
SD 3172 G	360	380	600	212	400	360	410	695	350	120	1000	840	220	50	42	30	36	445	TS 80	23172	2 x FR 600-10	ETS80	4 x 1220	9,7 kg
SD 3176 G	380	400	620	214	400	360	410	715	360	120	1040	870	220	50	42	30	36	455	TS 84	23176	2 x FR 620-10	ETS84	4 x 1280	9,6 kg
SD 3180 G	400	430	650	220	430	390	440	755	380	125	1120	950	240	60	48	30	42	580	TS 92	23180	2 x FR 650-10	ETS92	4 x 1410	12,0 kg
SD 3184 G	420	450	700	244	460	420	470	810	410	130	1170	1000	260	60	48	35	42	700	TS 96	23184	2 x FR 700-10	ETS96	4 x 1510	15,0 kg

These Housings can also be manufactured of ductile iron or cast steel. Special kevlar or felt seals on request.