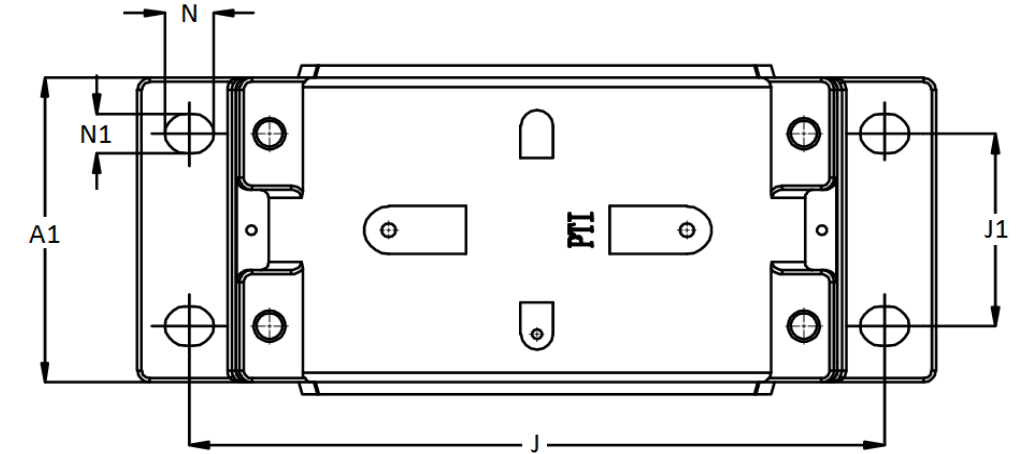
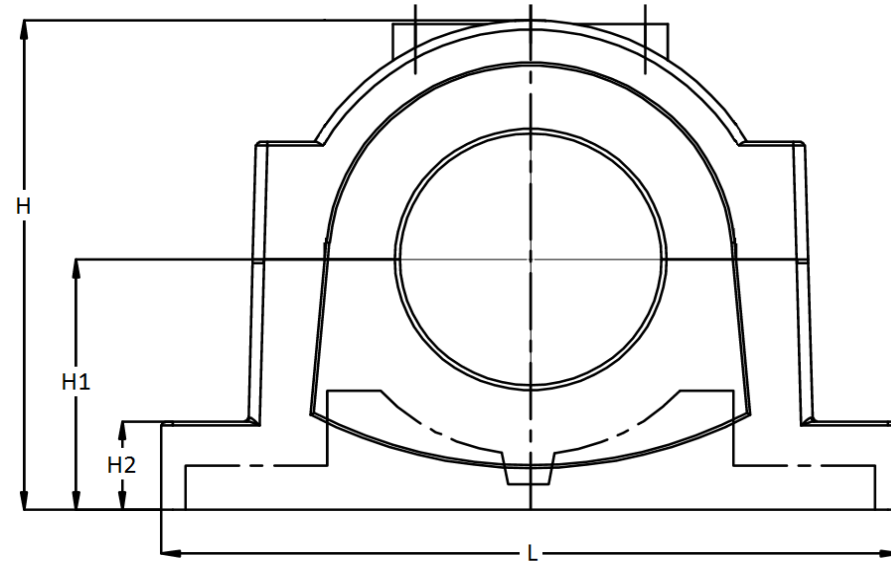
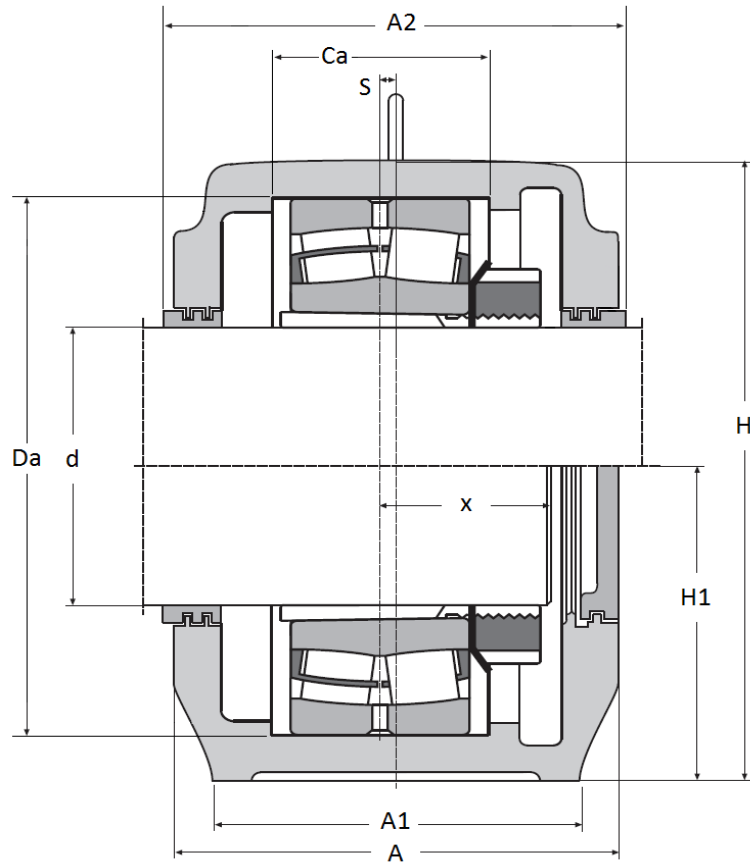




SD 3000 TS Series - Split Plummer Block Housings (SNL 3000 TS)

for spherical roller bearings on adapter sleeves, labyrinth seal, cast iron GG 20, incl. eye bolt.



Housing No.	Shaft		Dimensions (mm)											Mounting Bolt	Weight (kg)	Labyrinth Seals	Bearing	Adapter Sleeve	Fixing Rings	End cover	O-Ring \varnothing * Length	Grease Qty First filling		
	d	D _a	C _a	A	A ₁	H	H ₁	H ₂	L	J	J ₁	x	N										N ₁	S
SD 3036 TS	160	280	108	230	180	333	170	70	510	430	100	78	34	28	14	M24	69,5	TS 36	23036 K	H 3036	2 x FR 280-17	ETS36	4 x 560	1,2 kg
SD 3038 TS	170	290	115	240	190	353	180	75	530	450	110	83	34	28	15	M24	77,5	TS 38	23038 K	H 3038	4 x FR 290-10	ETS38	4 x 590	1,5 kg
SD 3040 TS	180	310	122	260	210	375	190	80	560	480	120	88	34	28	10	M24	97,5	TS 40-235	23040 K	H 3040	4 x FR 310-10	ETS44	4 x 620	2,0 kg
SD 3044 TS	200	340	130	280	230	411	210	85	610	510	130	93	42	35	10	M30	123	TS 44	23044 K	H 3044	4 x FR 340-10	ETS44	4 x 680	2,7 kg
SD 3048 TS	220	360	140	290	240	434	220	90	640	540	140	100	42	35	12	M30	139	TS 48	23048 K	H 3048	4 x FR 360-12	ETS48	4 x 750	3,0 kg
SD 3052 TS	240	400	148	310	260	474	240	95	700	600	150	106	42	35	12	M30	187	TS 52	23052 K	H 3052	2 x FR 400-22	ETS52	4 x 810	3,9 kg
SD 3056 TS	260	420	166	320	280	516	260	100	770	650	160	116	50	42	13	M36	221	TS 56-315	23056 K	H 3056	6 x FR 420-10	ETS60	4 x 870	4,9 kg
SD 3060 TS	280	460	166	320	280	551	280	105	790	670	160	119	50	42	16	M36	252	TS 60	23060 K	H 3060	2 x FR 460-24	ETS60	4 x 940	5,2 kg
SD 3064 TS	300	480	181	350	310	591	300	110	830	710	190	125	50	42	22	M36	301	TS 64	23064 K	H 3064	6 x FR 480-10	ETS64	4 x 1000	7,0 kg
SD 3068 TS	320	520	197	370	330	631	320	115	880	750	200	-	50	42	23	M36	339	TS 68	23068 K	H 3068	4 x FR 520-16	ETS68	4 x 1050	8,7 kg
SD 3072 TS	340	540	198	370	330	631	320	115	880	750	200	-	50	42	23	M36	339	TS 72	23072 K	H 3072	4 x FR 540-16	ETS72	4 x 1090	10,9 kg
SD 3076 TS	360	560	180	400	360	675	340	120	950	810	220	-	50	42	24	M36	427	TS 76	23076 K	H 3076	2 x FR 560-22,5	ETS76	4 x 1150	10,9 kg
SD 3080 TS	380	600	192	400	360	695	350	120	1000	840	220	-	50	42	30	M36	454	TS 80	23080 K	H 3080	2 x FR 600-22	ETS80	4 x 1220	11,7 kg
SD 3084 TS	400	620	194	400	360	715	360	120	1040	870	220	-	50	42	30	M36	470	TS 84	23084 K	H 3084	2 x FR 620-22	ETS84	4 x 1280	12,0 kg

These Housings can also be manufactured of ductile iron or cast steel. Special kevlar or felt seals on request.