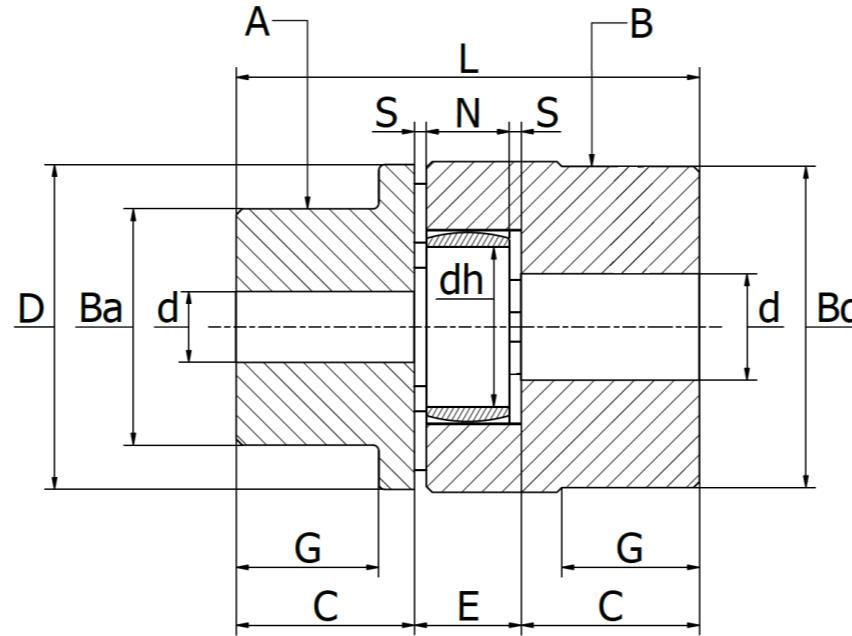
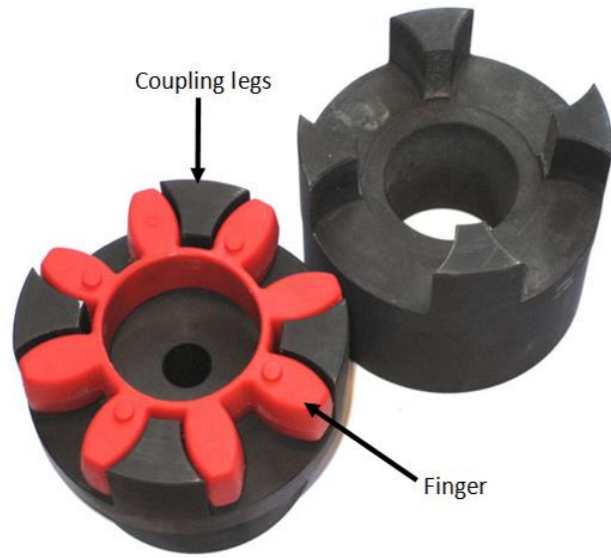




PTIDEX Couplings (PFG)

Cast Iron GG25, Temperature -40° to +100° can shortly be exposed to +120°



To order, please ask for PTIDEX + Component (A/B) + Size + Bore + Rubber.

Also available in aluminium (BS2024) and steel (C45) on request.

We can machine the shaft hole, keyway and setscrew upon request.

Size	Component	Coupling legs (Quantity)	Rubber part, rated torque (Nm)			Std bore (d)	Finished bore min - max	Dimensions (mm)									
			Yellow (Shore A 92)	Red (Shore A 98)	Fingers (Quantity)			L	C	E	N	S	D	dh	Ba / Bd	G	
19/24	A	3	10	17	6	6	6-16	66	25	16	12	2,0	40	18	32	20	
	B																40
24/32	A	4	35	60	8	9	9-24	78	30	18	14	2,0	55	27	40	24	
	B																55
28/38	A	4	95	160	8	10	10-28	90	35	20	15	2,5	65	30	48	28	
	B																65
38/45	A	4	190	325	8	12	12-38	114	45	24	18	3,0	80	38	66	37	
	B																78
42/55	A	4	265	450	8	12	12-42	126	50	26	20	3,0	95	46	75	40	
	B																94
48/60	A	4	310	525	8	12	12-48	140	56	28	21	3,5	105	51	85	45	
	B																104
55/70	A	4	410	685	8	15	15-55	160	65	30	22	4,0	120	60	98	52	
	B																118
65/75	A	4	625	940	8	15	15-65	185	75	35	26	4,5	135	68	115	61	
	B																133
75/90	A	5	1280	1920	10	15	15-75	210	85	40	30	5,0	160	80	135	69	
	B																158
90/100	A	5	2400	3600	10	38	38-90	245	100	45	34	5,5	200	100	160	81	
	B																180