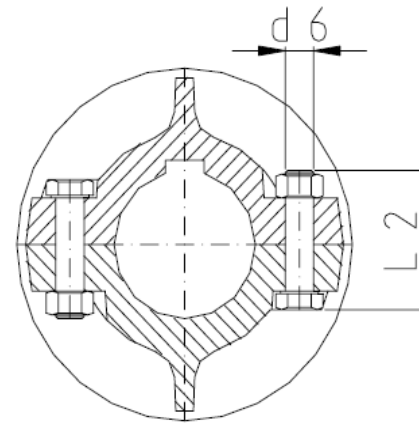
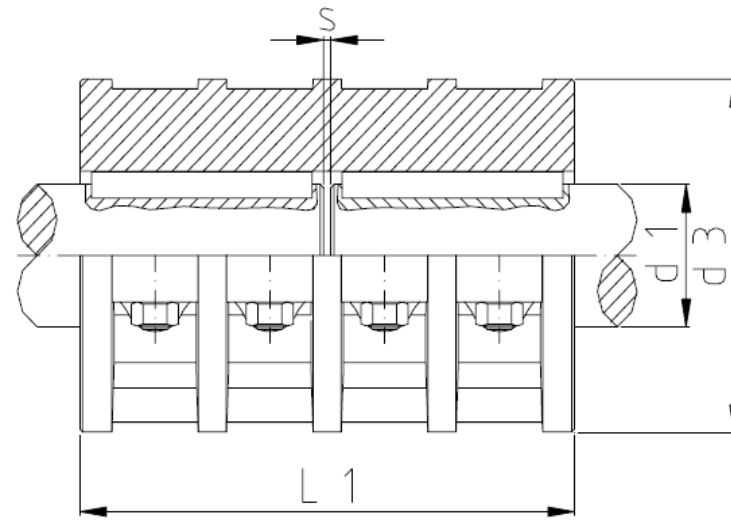
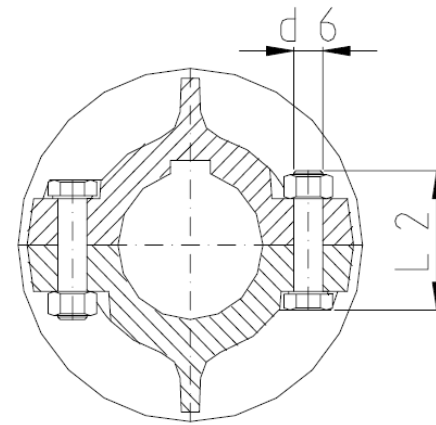
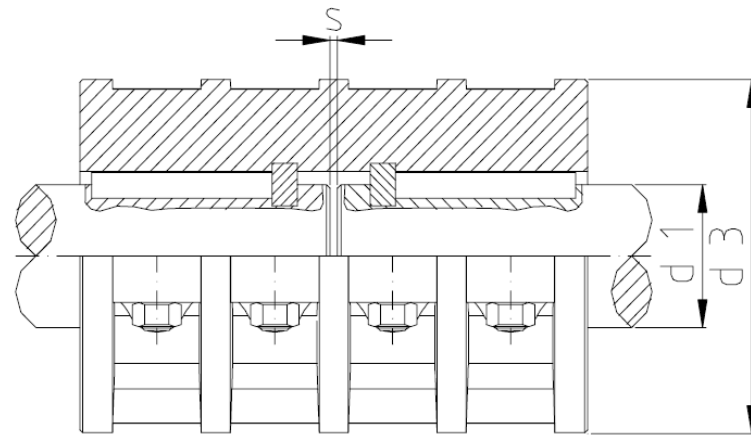


Style A for shaft-ends with the same diameter

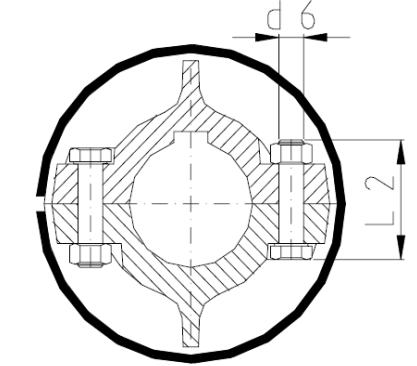
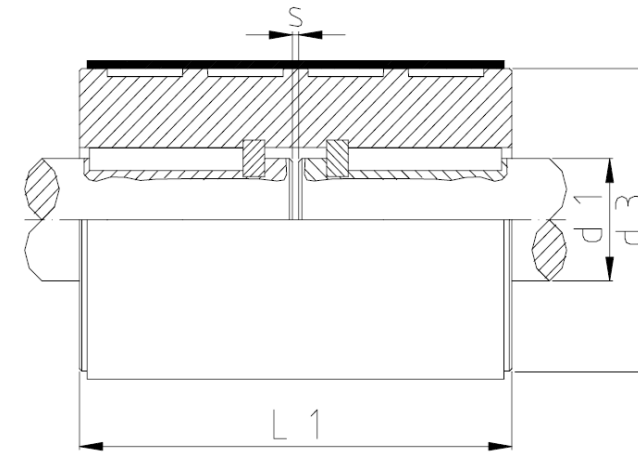


Part No.	Dimensions (mm)			Screws DIN 931 d6 x L2	Bolt tightening torque (Nm) min - max	Bore Tolerance	Keyway Key length mm	Hanger Spring Axial Loading kN max.	Rotation Speed RPM max.	Material GG			Material GS		
	d1 Bore size	d3	L1							Torque load Nm max.	Weight kg	Inertia kgm ²	Torque load Nm max.	Weight kg	Inertia kgm ²
DIN 115 A D=20	20	85	100	4 X M10x30	12 - 21	V7	-	-	1.700	25	1,9	0,0009	63	2,1	0,0010
DIN 115 A D=25	25	100	130	4 X M12x40	21 - 37	V7	-	5	1.500	40	4,5	0,0034	100	4,9	0,0037
DIN 115 A D=30	30	100	130	4 X M12x40	21 - 37	V7	-	5	1.500	60	4,2	0,0034	160	4,2	0,0036
DIN 115 A D=35	35	110	160	6 X M12x50	21 - 37	V7	-	8	1.420	80	6,5	0,0066	200	7,0	0,0071
DIN 115 A D=40	40	110	160	6 X M12x50	21 - 37	V7	-	12	1.420	100	6,2	0,0065	250	6,7	0,0070
DIN 115 A D=45	45	120	190	6 X M12x50	21 - 37	V7	-	16	1.350	125	8,5	0,0110	315	9,2	0,0120
DIN 115 A D=50	50	130	190	6 X M12x50	21 - 37	V7	-	16	1.300	150	9,0	0,0140	400	9,7	0,0160
DIN 115 A D=55	55	150	220	6 X M16x55	53 - 93	U7	100	20	1.200	500	13,0	0,0260	1.600	14,0	0,0280
DIN 115 A D=60	60	150	220	6 X M16x55	53 - 93	U7	100	24	1.200	850	12,5	0,0250	1.800	13,5	0,0270
DIN 115 A D=65	65	170	250	6 X M16x55	53 - 93	U7	100	24	1.120	1.250	18,5	0,0510	2.000	20,0	0,0550
DIN 115 A D=70	70	170	250	6 X M16x55	53 - 93	U7	110	30	1.120	1.700	17,0	0,0500	2.240	18,0	0,5400
DIN 115 A D=75	75	190	280	8 X M16x60	53 - 93	U7	125	37	1.060	2.000	28,0	0,1070	3.150	30,0	0,1160
DIN 115 A D=80	80	190	280	8 X M16x60	53 - 93	U7	125	37	1.060	2.500	27,0	0,1060	3.550	29,0	0,1140
DIN 115 A D=90	90	215	310	8 X M20x75	104 - 186	U7	140	42	1.000	3.800	41,0	0,2030	5.000	44,0	0,2190
DIN 115 A D=100	100	250	350	8 X M20x90	104 - 186	U7	160	55	920	5.400	63,0	0,3990	8.000	68,0	0,4310
DIN 115 A D=110	110	250	390	8 X M24x90	204 - 340	U7	160	55	920	7.500	70,0	0,4670	10.000	76,0	0,5050
DIN 115 A D=120	120	275	430	10 X M24x90	204 - 340	U7	200	70	870	11.000	96,0	0,7710	16.000	104,0	0,8320
DIN 115 A D=125	125	275	430	10 X M24x90	204 - 340	U7	200	70	870	11.000	93,0	0,7590	16.000	100,0	0,8200
DIN 115 A D=140	140	325	490	10 X M27x110	266 - 478	U7	200	90	800	15.000	160,0	1,6300	22.400	173,0	1,7600
DIN 115 A D=160	160	365	560	12 X M27x110	266 - 478	U7	250	110	750	23.000	255,0	2,8400	31.500	275,0	3,0700
DIN 115 A D=180	180	420	630	12 X M27x130	266 - 478	U7	280	-	690	32.000	320,0	5,4200	40.000	346,0	5,8600
DIN 115 A D=200	200	500	700	12 X M30x140	360 - 645	U7	320	-	630	40.000	550,0	12,0200	56.000	594,0	12,9800
DIN 115 A D=220	220	540	770	12 X M36x150	631 - 1130	U7	360	-	580	50.000	840,0	30,7800	80.000	907,0	33,2400

Style C for vertical design with insert rings



Style CS, the same as C but with a sheet-steel casing



Dimensions (mm)			Bolt tightening							Material GG			Material GS		
d1	d3	L1	Screws - DIN 931	torque (Nm)	Tolerance	Feather key	Hanger spring Axial loading	Rotation speed	Toque load	Weight style A	Inertia	Torgue load	Weight style A	Inertia	
Bore size			d6 x L2	min - max			kN max.	Min.-1 max.	Nm max.	kg.	kgm ²	Nm max.	kg.		
25	110	160	6x M12x50	2,6 - 4,7	V7	56	12	1.420	40	7	0,0066	100	7,5	0,0071	
30	110	160	6x M12x50	21 - 37	V7	56	17	1.420	60	6,8	0,0065	160	7,3	0,007	
35	120	190	6x M12x50	21 - 37	V7	70	23	1.350	80	9,3	0,011	200	10	0,012	
40	130	190	6x M12x50	21 - 37	V7	70	30	1.300	100	9,9	0,014	250	10,7	0,016	
45	150	220	6x M16x55	53 - 93	V7	80	36	1.200	125	41,2	0,026	315	15,3	0,028	
50	50	150	6x M16x55	53 - 93	V7	80	45	1.200	150	13,8	0,025	400	14,8	0,027	
55	170	250	6x M16x55	53 - 93	U7	90	53	1.120	500	20,1	0,51	1.600	21,6	0,055	
60	170	250	6x M16x55	53 - 93	U7	90	62	1.120	850	18,7	0,05	1.800	20,1	0,054	
65	190	280	8x M16x60	53 - 93	U7	100	72	1.060	1.250	30	0,107	2.000	32,3	0,116	
70	190	280	8x M16x60	53 - 93	U7	100	82	1.060	1.700	29,2	0,106	2.240	31,4	0,114	
75	215	310	8x M20x75	104 - 186	U7	110	92	1.000	2.000	45,1	0,203	3.150	48,5	0,219	
80	215	310	8x M20x75	104 - 186	U7	110	105	1.000	2.500	43,7	0,203	3.550	47	0,219	
90	250	350	8x M20x90	104 - 186	U7	125	135	920	3.800	66,4	0,399	5.000	71,4	0,431	
100	250	390	8x M24x90	204 - 340	U7	140	165	920	5.400	74,3	0,467	8.000	79,9	0,505	
110	275	430	10x M24x90	204 - 340	U7	160	200	870	7.500	101	0,771	10.000	108,7	0,832	
120	325	490	10x M27x110	266 - 478	U7	180	250	800	11.000	173,5	1,63	16.000	186,7	1,76	
125	325	490	10x M27x110	266 - 478	U7	180	250	800	11.000	170,1	1,63	16.000	183	1,76	
140	365	560	12x M27x110	266 - 478	U7	200	310	750	15.000	272,5	2,84	22.400	293,2	3,07	
160	420	630	12x M27x130	266 - 478	U7	220	400	690	23.000	342,4	5,42	31.500	386,4	5,86	
180	500	700	12x M27x140	266 - 478	U7	250	500	630	32.000	577	12,02	40.000	620,8	12,98	
200	540		12x M27x150	266 - 478	U7	280	600	580	40.000	871,8	30,78	56.000	937,9	33,24	