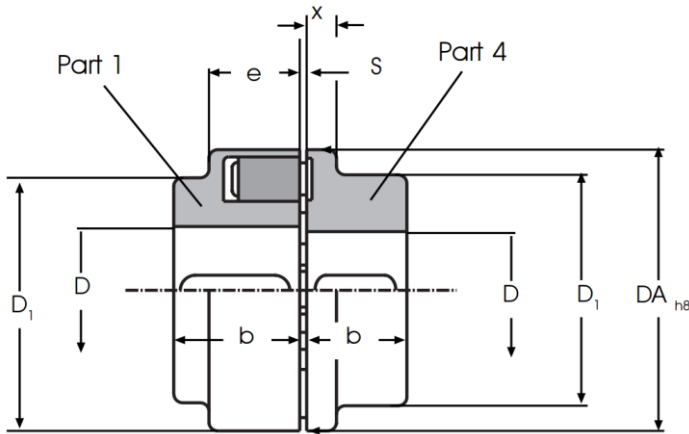




DDK Flexible couplings

Flexible claw couplings with rubber elements for connection of shafts. Style A = 2 part.



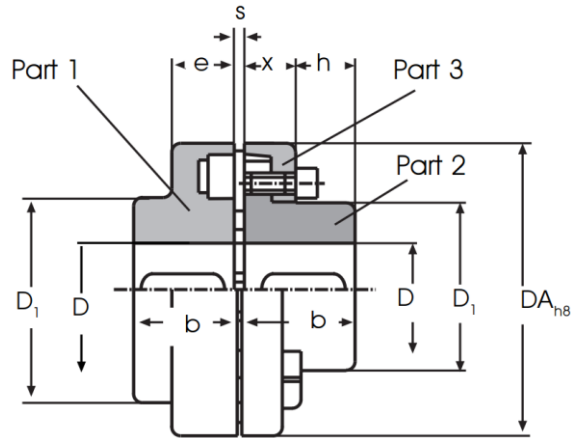
Due to their flexibility, noise, shock and rotational variations are efficiently damped.

Radial, axial and angular movement between the two halves of the coupling are corrected.

DDK couplings are manufactured in 2 and 3 part arrangements. Replacement of the elements in the 2 part assembly is only possible after axial displacement of the drive. Replacement of the elements in the 3 part assembly is possible without axial displacement of the drive.

The oil resistant rubber elements are suitable for use with temperatures from -20 C to +80 C.

| Part No. | Dimensions (mm) | | | | | | | Speed Rpm | Norminal Torque Nm | Norminal Value Pn(kw)/n | Bore D | | Torque loading kgm ² | Weight kg. |
|-----------|-----------------|-------------|--------------|----|-----|----|-----|--------------|-----------------------|----------------------------|--------|--------|------------------------------------|---------------|
| | DA | D1 - Part 1 | D-1 - Part 4 | x | c | e | s | | | | Part 1 | Part 4 | | |
| DDK 58 A | 58 | 58 | 40 | 8 | 20 | 20 | 2-4 | 5000 | 19 | 0,0020 | 8-19 | 8-24 | 0,0002 | 0,45 |
| DDK 68 A | 68 | 68 | 46 | 8 | 20 | 20 | 2-4 | 5000 | 34 | 0,0036 | 8-24 | 8-28 | 0,0003 | 0,63 |
| DDK 80 A | 80 | 80 | 68 | 10 | 30 | 30 | 2-4 | 5000 | 60 | 0,0063 | 10-30 | 10-38 | 0,0012 | 1,50 |
| DDK 95 A | 95 | 76 | 76 | 12 | 35 | 30 | 2-4 | 5000 | 100 | 0,0110 | 11-42 | 11-42 | 0,0027 | 2,60 |
| DDK 110 A | 110 | 86 | 86 | 14 | 40 | 34 | 2-4 | 5000 | 160 | 0,0170 | 14-48 | 14-48 | 0,0055 | 4,00 |
| DDK 125 A | 125 | 100 | 100 | 18 | 50 | 36 | 2-4 | 5000 | 240 | 0,0250 | 16-55 | 16-55 | 0,0107 | 6,10 |
| DDK 140 A | 140 | 100 | 100 | 20 | 55 | 34 | 2-4 | 4900 | 360 | 0,0380 | 18-60 | 18-60 | 0,0140 | 7,00 |
| DDK 160 A | 160 | 108 | 108 | 20 | 60 | 39 | 2-6 | 4250 | 560 | 0,0590 | 22-65 | 22-65 | 0,0250 | 9,40 |
| DDK 180 A | 180 | 125 | 125 | 20 | 70 | 42 | 2-6 | 3800 | 880 | 0,0920 | 24-75 | 24-75 | 0,0450 | 14,00 |
| DDK 200 A | 200 | 140 | 140 | 24 | 80 | 47 | 2-6 | 3400 | 1340 | 0,1400 | 28-35 | 28-35 | 0,0800 | 20,00 |
| DDK 225 A | 225 | 150 | 150 | 18 | 90 | 52 | 2-6 | 3000 | 2000 | 0,2100 | 38-90 | 38-90 | 0,1350 | 24,00 |
| DDK 250 A | 250 | 165 | 165 | 18 | 100 | 60 | 3-8 | 2750 | 2800 | 0,2900 | 48-100 | 48-100 | 0,2300 | 34,00 |
| DDK 280 A | 280 | 180 | 180 | 20 | 110 | 65 | 3-8 | 2450 | 3900 | 0,4100 | 55-110 | 55-110 | 0,3700 | 45,00 |



Due to their flexibility, noise, shock and rotational variations are efficiently damped.

Radial, axial and angular movement between the two halves of the coupling are corrected.

DDK couplings are manufactured in 2 and 3 part arrangements. Replacement of the elements in the 2 part assembly is only possible after axial displacement of the drive. Replacement of the elements in the 3 part assembly is possible without axial displacement of the drive.

The oil resistant rubber elements are suitable for use with temperatures from -20 C to +80 C.

| Part No. | Dimensions (mm) | | | | | | | | Speed Rpm | Norminal Torque Nm | Norminal Value Pn(kw)/n | Bore D | | Torque loading kgm ² | Weight kg. |
|------------------|-----------------|-------------|-------------|----|-----|----|-----|------|--------------|-----------------------|----------------------------|---------|---------|------------------------------------|---------------|
| | DA | D1 - Part 1 | D1 - Part 2 | x | b | e | h | s | | | | Part 1 | Part 2 | | |
| DDK 110 B | 110 | 86 | 62 | 20 | 40 | 34 | 33 | 2-4 | 5000 | 160 | 0,0170 | 14-48 | 14-38 | 0,0047 | 3,5 |
| DDK 125 B | 125 | 100 | 75 | 23 | 50 | 36 | 38 | 2-4 | 5000 | 240 | 0,0250 | 16-55 | 16-45 | 0,0095 | 5,6 |
| DDK 140 B | 140 | 100 | 82 | 28 | 55 | 34 | 43 | 2-4 | 4900 | 360 | 0,0380 | 18-60 | 18-50 | 0,0150 | 7,0 |
| DDK 160 B | 160 | 108 | 95 | 28 | 60 | 39 | 47 | 2-6 | 4250 | 560 | 0,0590 | 22-65 | 22-58 | 0,0280 | 9,8 |
| DDK 180 B | 180 | 125 | 108 | 30 | 70 | 42 | 50 | 2-6 | 3800 | 880 | 0,0920 | 24-75 | 24-65 | 0,0490 | 14,2 |
| DDK 200 B | 200 | 140 | 122 | 32 | 80 | 47 | 53 | 2-6 | 3400 | 1340 | 0,1400 | 28-85 | 28-75 | 0,0850 | 19,8 |
| DDK 225 B | 225 | 150 | 138 | 38 | 90 | 52 | 61 | 2-6 | 3000 | 2000 | 0,2100 | 38-90 | 24-85 | 0,1500 | 27,0 |
| DDK 250 B | 250 | 165 | 155 | 42 | 100 | 60 | 69 | 3-8 | 2750 | 2800 | 0,2900 | 48-100 | 32-95 | 0,2500 | 37,0 |
| DDK 280 B | 280 | 180 | 172 | 42 | 110 | 65 | 73 | 3-8 | 2450 | 3900 | 0,4100 | 55-110 | 55-105 | 0,4000 | 48,0 |
| DDK 315 B | 315 | 200 | 195 | 47 | 125 | 70 | 78 | 3-8 | 2150 | 5500 | 0,5800 | 100-120 | 100-120 | 0,7100 | 66,0 |
| DDK 350 B | 350 | 180 | 180 | 51 | 140 | 74 | 83 | 3-8 | 1950 | 7700 | 0,8100 | 65-110 | 65-110 | 1,1000 | 86,0 |
| DDK 400 B | 400 | 200 | 200 | 56 | 160 | 78 | 88 | 3,8 | 1700 | 10300 | 1,1000 | 70-120 | 70-120 | 1,9000 | 122,0 |
| DDK 440 B | 440 | 215 | 215 | 64 | 180 | 86 | 99 | 5-10 | 1550 | 13500 | 1,4000 | 80-130 | 80-130 | 3,0000 | 159,0 |
| DDK 480 B | 480 | 240 | 240 | 65 | 190 | 90 | 104 | 5-10 | 1400 | 16600 | 1,7000 | 90-145 | 90-145 | 4,6000 | 200,0 |