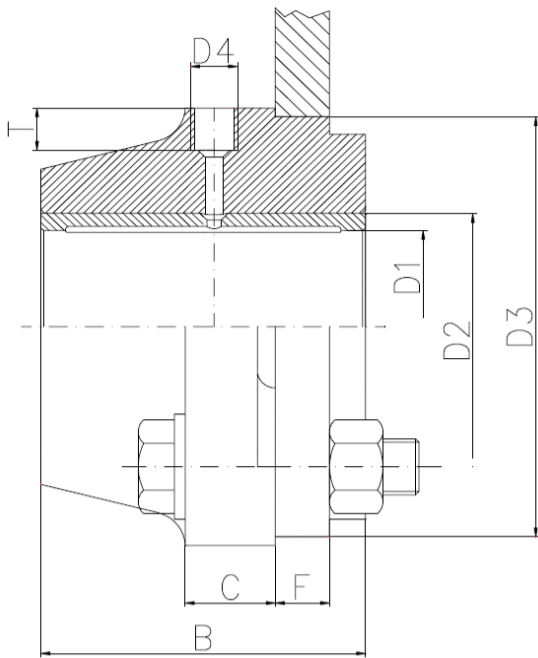
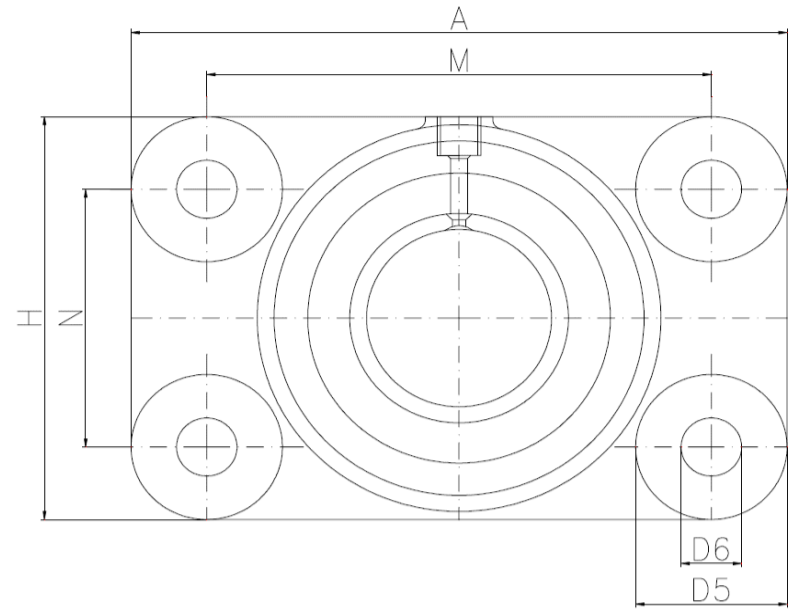
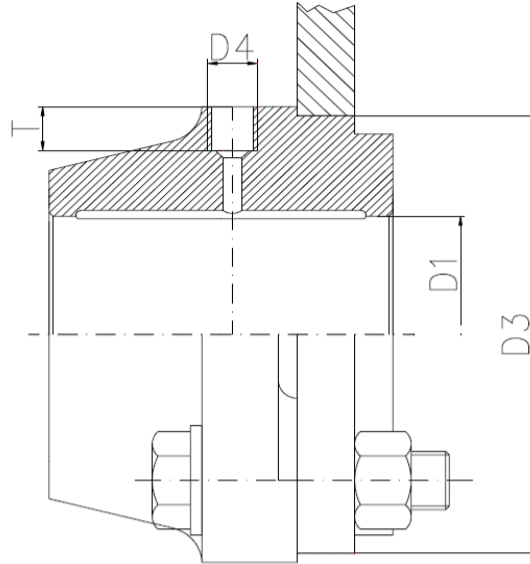


Style A with bushing

Style B without bushing


Style A	Style B	Dimensions (mm)													Weight
d1 / D10	d1/D7	D2 (D7)	D3 (h9)	D4	D5	D6	A	B	C	F	H	M	N	T	(kg.)
35	45	45	80	R 1/4	35	14	145	70	20	20	85	110	50	12	2,9
40	50	50	80	R 1/4	35	14	145	70	20	20	85	110	50	12	3
45	55	55	100	R 1/4	45	18	175	80	25	20	105	130	60	12	5,5
50	60	60	100	R 1/4	45	18	175	80	25	20	105	130	60	12	5,3
55	65*	65	120	R 1/4	45	18	195	90	25	25	125	150	80	12	8,1
60	70	70	120	R 1/4	45	18	195	90	25	25	125	150	80	12	7,8
65*	75*	75	140	R 1/4	50	22	220	100	30	25	150	170	100	12	9,5
70	80	80	140	R 1/4	50	22	220	100	30	25	150	170	100	12	12
75*	90	85	160	R 1/4	50	22	240	100	30	30	170	190	120	12	13,1
80	90	90	160	R 1/4	50	22	240	100	30	30	170	190	120	12	14,5
90	100	100	180	R 1/4	50	22	260	120	30	30	190	210	140	12	25
90	110	-	180	R 1/4	50	22	260	120	30	30	190	210	140	12	24
100	120*	115	200	R 3/8	55	26	285	120	35	40	215	230	160	13	26
110	125	125	200	R 3/8	55	26	285	120	35	40	215	230	160	13	30
110	130*	125	200	R 3/8	55	26	285	120	33	40	215	230	160	13	28
120*	140	135	230	R 3/8	60	26	310	140	40	40	240	250	180	13	40
125	140	140	230	R 3/8	60	26	310	140	40	40	240	250	180	13	48
130*	150	145	230	R 3/8	60	26	310	140	40	40	240	250	250	180	52
140	160	155	260	R 3/8	60	26	330	160	40	40	270	270	210	13	57
150*	180	165	260	R 3/8	60	26	330	160	40	40	270	270	210	13	55
160	-	175	290	R 3/8	65	33	365	180	45	40	305	300	240	13	82
180	-	195	290	R 3/8	65	33	365	180	45	40	305	300	240	13	95

Operating conditions: Running speed up to approximately 1.5m/s.

* = If possible, please avoid this size.