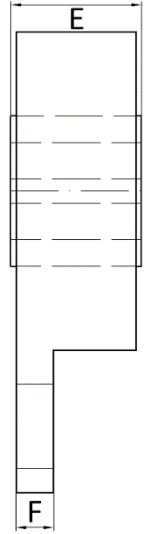
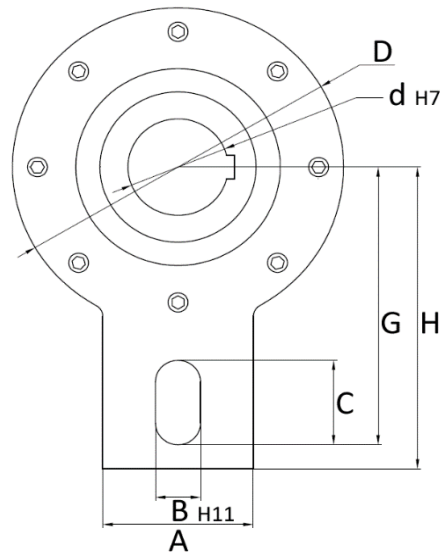




RSPW Series - One Way Clutch

Sprag type freewheels, alternative to RSBW.



Item No.	Dimensions (mm)									Load Rating TKN (Nm)	Limiting Speed (RPM)	Weight (kg)
	d	A	B	C	D	E	F	G	H			
RSPW 20	20	40	18	35	106	35	15	102,5	113	375	400	2
RSPW 25	25	40	18	35	106	48	15	102,5	113	606	400	2,6
RSPW 30	30	40	18	35	106	48	15	102,5	113	606	400	2,5
RSPW 35	35	40	18	35	106	48	13	102,5	113	485	400	2,4
RSPW 40	40	60	18	35	132	52	13	115	125	1035	300	4,6
RSPW 45	45	60	18	35	132	52	13	115	125	1035	300	4,5
RSPW 50	50	60	18	35	132	52	13	115	125	1035	300	4,5
RSPW 55	55	60	18	35	132	52	15	115	125	1035	300	4,4
RSPW 60	60	70	18	35	161	54	13	130	140	2040	250	6,5
RSPW 65	65	70	18	35	161	54	15	130	140	2040	250	6,5
RSPW 70	70	70	18	35	161	54	13	130	140	2040	250	6,4
RSPW 75	75	70	25	45	190	70	20	150	165	3900	200	9,9
RSPW 80	80	70	25	45	190	70	13	150	165	3900	200	9,8
RSPW 90	90	70	25	45	190	70	20	150	165	3900	200	9,8
RSPW 100	100	90	30	45	210	84	15	165	185	6280	200	17,3
RSPW 120	120	110	26	26	270	141	12	398	425	11000	150	42,4

Maximum load rating = TKN * 2,5

Keyway to DIN 6885.1

Shaft tolerance must be h6

When using the freewheel as a backstop, the lever arm must be fixed to the construction.

When using the freewheel as an intermittent feed, a bolt is mounted in the slot of the lever arm, without clamping it down. To allow for free movement, the bolt needs to have some clearance. 1-2% of the slot width B is recommended.

When mounted flush on the back, the backstop is in the counter clockwise direction. The backstop direction can be changed on request.

These freewheels are pregreased and ready for installation.