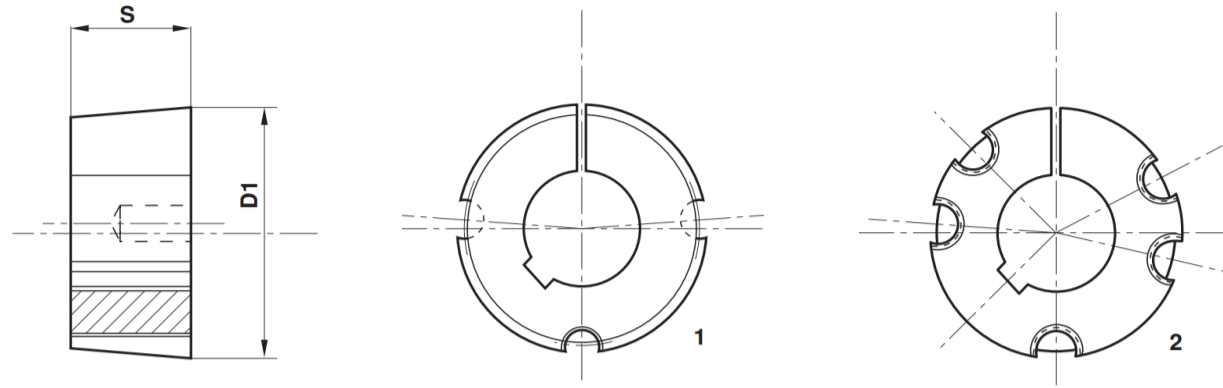




Taper Bushes

Taper Bushes makes assembly and disassembly of V-belt pulleys, sprockets, couplings, weld-on hubs and pulleys quick and easy.

Available in metric- and inch sizes. We offer certain sizes in a reinforced version of steel.



Standard inch bore series

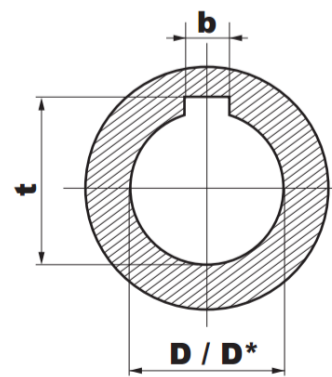
Material: cast Iron (EN-GJL-250 UNI EN 1561)

Example of suffix : TB 1108-1 1-8"

Bush type	Dimensions		Type	Max. Torque (Nm)	Screws	Screw tightening torque (Nm)	Weight (kg)
	Bore in inches (ISO E 8)	D1 mm S mm					
1008	3/8" 1/2" 5/8" 3/4" 7/8" 1" *	35,0 22,3	1	136	1/4" x 1/2"	5,6	0,16
1108	3/8" 1/2" 5/8" 3/4" 7/8" 1" 1"1/8"	38,0 22,3	1	147	1/4" x 1/2"	5,6	0,16
1210	1/2" 5/8" 3/4" 7/8" 1" 1"1/8" 1"1/4"	47,5 25,4	1	407	3/8" x 5/8"	19,6	0,32
1215	1/2" 5/8" 3/4" 7/8" 1" 1"1/8" 1"1/4"	47,5 38,1	1	407	3/8" x 5/8"	19,6	0,50
1610	1/2" 5/8" 3/4" 7/8" 1" 1"1/8" 1"1/4"	57,0 25,4	1	486	3/8" x 5/8"	19,6	0,41
1615	1/2" 5/8" 3/4" 7/8" 1" 1"1/8" 1"1/4" 1"3/8" 1"1/2" 1"5/8"	57,0 38,1	1	486	3/8" x 5/8"	19,6	0,60
2012	3/4" 7/8" 1" 1"1/8" 1"1/4" 1"3/8" 1"1/2" 1"5/8" 1"3/4" 1"7/8" 2"	70,0 31,8	1	808	7/16" x 7/8"	30,4	0,75
2517	3/4" 7/8" 1" 1"1/8" 1"1/4" 1"3/8" 1"1/2" 1"5/8" 1"3/4" 1"7/8" 2" 2"1/8" 2"1/4" 2"3/8" 2"1/2"	85,5 44,5	1	1310	1/2" x 1"	48,0	1,06
3020	1"1/4" 1"3/8" 1"1/2" 1"5/8" 1"3/4" 1"7/8" 2" 2"1/8" 2"1/4" 2"3/8" 2"1/2" 2"5/8" 2"3/4" 2"7/8" 3"	108,0 50,8	1	2710	5/8" x 1"1/4"	90,0	2,50
3030	1"1/4" 1"3/8" 1"1/2" 1"5/8" 1"3/4" 1"7/8" 2" 2"1/8" 2"1/4" 2"3/8" 2"1/2" 2"5/8" 2"3/4" 2"7/8" 3"	108,0 76,2	1	2710	5/8" x 1"1/4"	90,0	3,75
3525	1"1/2" 1"5/8" 1"3/4" 1"7/8" 2" 2"1/8" 2"1/4" 2"3/8" 2"1/2" 2"5/8" 2"3/4" 2"7/8" 3" 3"1/8" 3"1/4" 3"3/8" 3"1/2"	127,0 64,9	2	5060	1/2" x 1"1/2"	112,0	4,20
3535	1"1/2" 1"5/8" 1"3/4" 1"7/8" 2" 2"1/8" 2"1/4" 2"3/8" 2"1/2" 2"5/8" 2"3/4" 2"7/8" 3" 3"1/8" 3"1/4" 3"3/8" 3"1/2"	127,0 88,9	2	5060	1/2" x 1"1/2"	112,0	5,13
4030	1"3/4" 1"7/8" 2" 2"1/8" 2"1/4" 2"3/8" 2"1/2" 2"5/8" 2"3/4" 2"7/8" 3" 3"1/8" 3"1/4" 3"3/8" 3"1/2" 3"3/4" 4"	146,0 76,2	2	8740	5/8" x 1"3/4"	169,0	6,75
4040	1"3/4" 1"7/8" 2" 2"1/8" 2"1/4" 2"3/8" 2"1/2" 2"5/8" 2"3/4" 2"7/8" 3" 3"1/8" 3"1/4" 3"3/8" 3"1/2" 3"3/4" 4"	146,0 101,6	2	8740	5/8" x 1"3/4"	169,0	7,68
4545	2"1/4" 2"3/8" 2"1/2" 2"5/8" 2"3/4" 2"7/8" 3" 3"1/8" 3"1/4" 3"3/8" 3"1/2" 3"3/4" 4" 4"1/4" 4"1/2" 4"3/4" 5"	162,0 115,0	2	12400	3/4" x 2"	192,0	10,56
5040	2"3/4" 2"7/8" 3" 3"1/8" 3"1/4" 3"3/8" 3"1/2" 3"3/4" 4" 4"1/4" 4"1/2" 4"3/4" 5"	177,6 101,6	2	14200	7/8" x 2"1/4"	271,0	14,20
5050	2"3/4" 2"7/8" 3" 3"1/8" 3"1/4" 3"3/8" 3"1/2" 3"3/4" 4" 4"1/4" 4"1/2" 4"3/4" 5"	177,6 127,0	2	14200	7/8" x 2"1/4"	271,0	15,17

Dimension of the keyways (B.S. 46 - Part. 1-1958)

D - Over/to	b	t	D - Over/to	b	t	D*	b	T
1/4" - 1/2"	1/8"	D + 1/16"	2"1/2 - 3"	3/4"	D + 1/4"	1"*	1/4"	D + 1/16"
1/2" - 3/4"	3/16"	D + 3/32"	3" - 3"1/2"	7/8"	D + 5/16"	1"1/8 *	5/16"	D + 5/64"
3/4" - 1"	1/4"	D + 1/8"	3"1/2 - 4"	1"	D + 3/8"	1"5/8 *	7/16"	D + 1/8"
1" - 1"1/4"	5/16"	D + 1/8"	4" - 5"	1"1/4"	D + 7/16"			
1"1/4 - 1"1/2"	3/8"	D + 1/8"	5" - 6"	1"1/2"	D + 1/2"			
1"1/2 - 1"3/4"	7/16"	D + 5/32"	6" - 7"	1"3/4"	D + 5/8"			
1"3/4 - 2"	1/2"	D + 5/32"						
2" - 2"1/2"	5/8"	D + 7/32"						



Shafts with a diameter tolerance of +0,05 / -0,125 mm are recommended. Best results are achieved with a ISO h6 tolerance. For shafts up to 100 mm diameter, an affordable forged h9 shaft can be used. To be used with or without key.