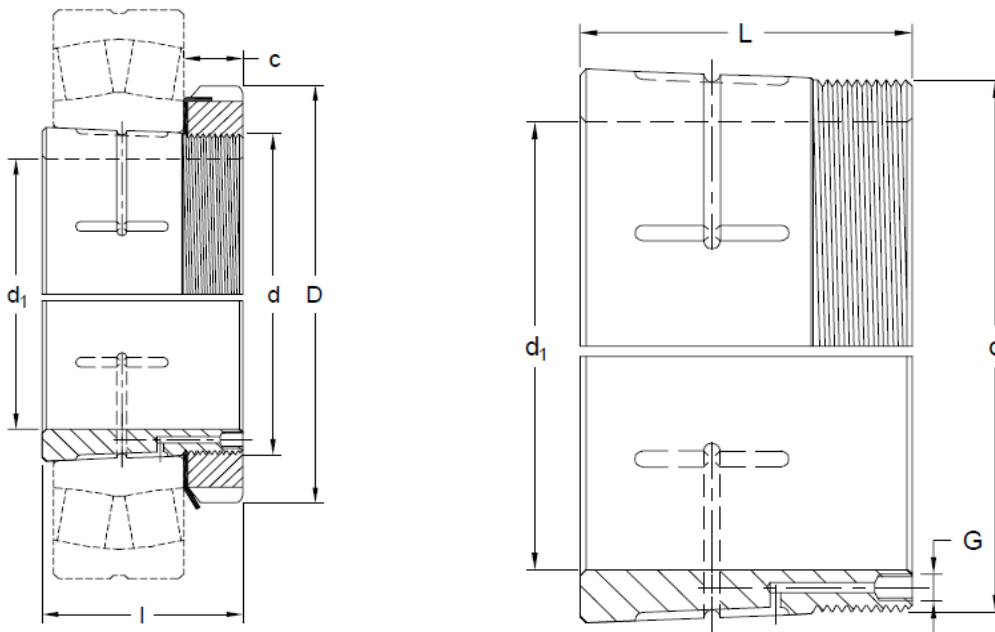




H 2300 H Series (OH 2300 H)

hydraulic adapter sleeves for 23200 series spherical bearings, use with shaft tolerances h7, h8 and h9.



Product No.	Dimension (mm)						Nut	Lock Washer	G	Weight (kg)
	d ₁	d	d _{thread}	l / L	D	c				
H 2332 H	140	160	M160x3	147	210	28	KM32	MB32	M6	9,3
H 2334 H	150	170	M170x3	154	220	29	KM34	MB34	M6	10,4
H 2336 H	160	180	M180x3	161	230	30	KM36	MB36	M6	11,6
H 2338 H	170	190	M190x3	169	240	31	KM38	MB38	M6	12,9
H 2340 H	180	200	M200x3	176	250	32	KM40	MB40	M6	14,2
H 2344 H	200	220	Tr220x4	186	280	35	HM44T	MB44	M6	17,8
H 2348 H	220	240	Tr240x4	199	300	37	HM48T	MB48	M6	20,9
H 2352 H	240	260	Tr260x4	211	330	39	HM52T	MB52	M6	25,7
H 2356 H	260	280	Tr280x4	224	350	41	HM56T	MB56	M6	29,8