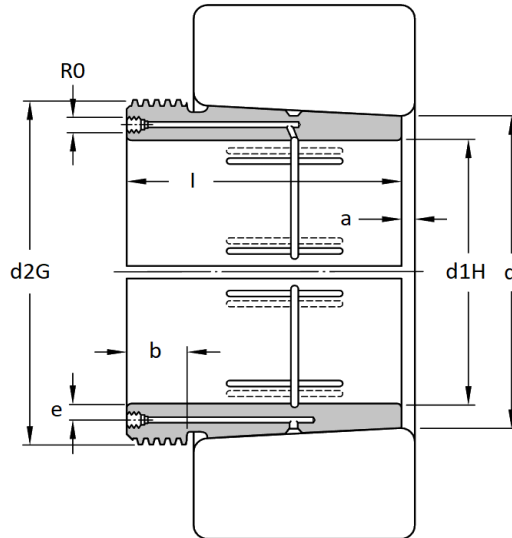
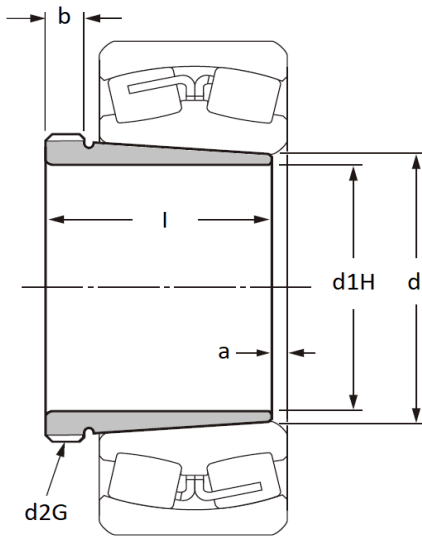


AH & AHX 3200 Series - Withdrawal Sleeves

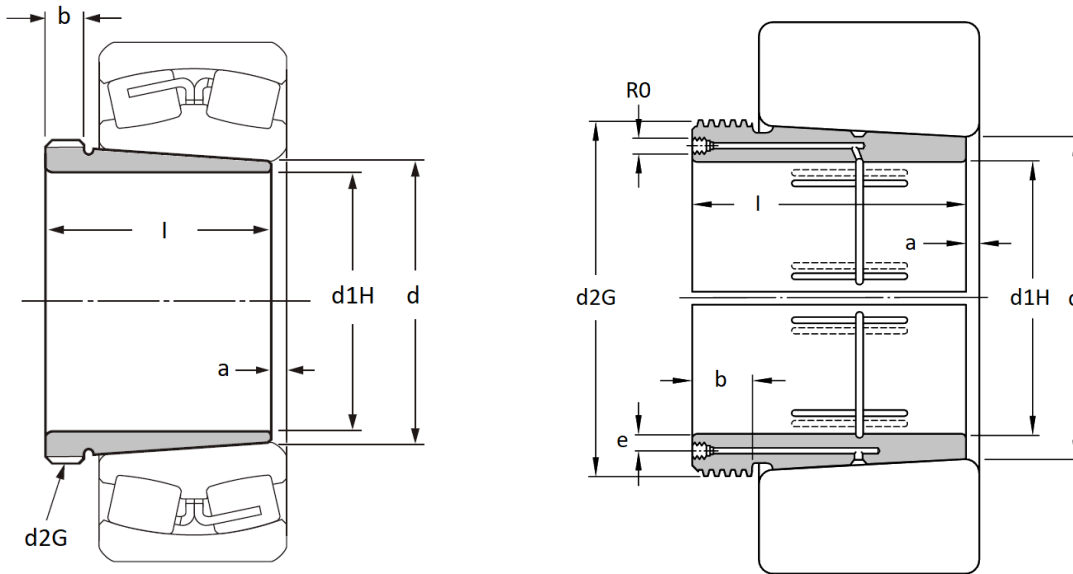
main dimensions to DIN 5416, taper 1:12, use with shaft tolerances h7, h8 and h9. Prefix AOH = Hydraulic mounting, suffix A & G = different thread.



Part No.	Dimensions (mm)								Weight (kg)
	d1H	l	a	b	d	d2G	e	R0	
AH 3217	80	60	4	10	85	M95x2	-	-	0,52
AHX 3218	85	63	4	10	90	M100x2	-	-	0,58
AHX 3219	90	67	4	11	95	M105x2	-	-	0,67
AHX 3220	95	73	4	11	100	M110x2	-	-	0,78
AHX 3222 A	105	82	4	11	110	M120x2	-	-	0,98
AHX 3224 A	115	90	4	13	120	M130x2	-	-	1,22
AHX 324	115	69	4	13	120	M130x2	-	-	0,89
AHX 326	125	74	4	14	130	M140x2	-	-	1,05
AHX 3226	125	98	4	15	130	M145x2	-	-	1,61
AHX 3226 G	125	98	4	15	130	M140x2	-	-	1,48
AHX 3228 G	135	104	5	15	140	M150x2	-	-	1,72
AHX 3228	135	104	5	15	140	M155x3	-	-	1,86
AHX 328	135	77	5	14	140	M150x2	-	-	1,18
AHX 3230	145	114	5	17	150	M165x3	-	-	2,25
AHX 3230 G	145	114	5	17	150	M160x3	-	-	2,09
AOH 3232	150	124	6	20	160	M180x3	4,5	M6	4,08
AOH 3232 G	150	124	6	20	160	M170x3	4,5	M6	3,65
AH 3232 G	150	124	6	20	160	M170x3	-	-	3,65
AH 3232	150	124	6	20	160	M180x3	-	-	4,08
AH 3234	160	134	6	24	170	M190x3	-	-	4,83
AH 3234 G	160	134	6	24	170	M180x3	-	-	4,29
AOH 3234 G	160	134	6	24	170	M180x3	4,5	M6	4,29
AOH 3234	160	134	6	24	170	M190x3	4,5	M6	4,83
AOH 3236	170	140	6	25	180	M200x3	4,5	M6	5,39
AOH 3236 G	170	140	6	25	180	M190x3	4,5	M6	4,80
AH 3236 G	170	140	6	25	180	M190x3	-	-	4,80
AH 3236	170	140	6	25	180	M200x3	-	-	5,39

AH & AHX 3200 Series - Withdrawal Sleeves

main dimensions to DIN 5416, taper 1:12, use with shaft tolerances h7, h8 and h9. Prefix AOH = Hydraulic mounting, suffix A & G = different thread.



Part No.	d1H		Dimensions (mm)						R0	Weight (kg)
	mm	l	a	b	d	d2G	e			
AOH 3238	180	145	7	25	190	Tr210x4	4,5	M6	5,9	
AOH 3238 G	180	145	7	25	190	M200x3	4,5	M6	5,3	
AH 3238 G	180	145	7	25	190	M200x3	-	-	5,3	
AH 3238	180	145	7	25	190	Tr210x4	-	-	5,9	
AH 3240	190	153	7	24	200	Tr220x4	-	-	6,6	
AOH 3240	190	153	7	24	200	Tr220x4	4,5	M6	6,6	
AOH 3260	280	228	8	34	300	Tr330x5	8,5	G1/8	26,0	
AOH 3260 G	280	228	8	34	300	Tr320x5	8,5	G1/8	24,6	
AH 3260 G	280	228	8	34	300	Tr320x5	-	-	24,6	
AH 3260	280	228	8	34	300	Tr330x5	-	-	26,0	
AOH 3264 G	300	246	8	36	320	Tr340x5	8,5	G1/8	28,9	
AOH 3264	300	246	8	36	320	Tr350x5	8,5	G1/8	30,4	
AOH 3268	320	264	9	38	340	Tr370x5	8,5	G1/8	35,3	
AOH 3268 G	320	264	9	38	340	Tr360x5	8,5	G1/8	33,6	
AOH 3272 G	340	274	9	40	360	Tr380x5	8,5	G1/8	37,3	
AOH 3272	340	274	9	40	360	Tr400x5	8,5	G1/8	41,1	
AOH 3276	360	284	10	42	380	Tr420x5	8,5	G1/8	45,5	
AOH 3276 G	360	284	10	42	380	Tr400x5	8,5	G1/8	41,3	
AOH 3280 G	380	302	10	44	400	Tr420x5	8,5	G1/8	47,1	
AOH 3280	380	302	10	44	400	Tr440x5	8,5	G1/8	51,7	
AOH 3284	400	321	10	46	420	Tr460x5	8,5	G1/8	58,6	
AOH 3284 G	400	321	10	46	420	Tr440x5	8,5	G1/8	53,6	
AOHX 3288 G	420	330	11	48	440	Tr460x5	8,5	G1/8	58,2	
AOHX 3288	420	330	11	48	440	Tr480x5	8,5	G1/8	63,7	
AOHX 3292	440	349	11	50	460	Tr510x6	8,5	G1/8	74,6	
AOHX 3292 G	440	349	11	50	460	Tr480x5	8,5	G1/8	65,6	
AOHX 3296 G	460	364	12	52	480	Tr500x5	8,5	G1/8	72,4	
AOHX 3296	460	364	12	52	480	Tr530x6	8,5	G1/8	82,2	