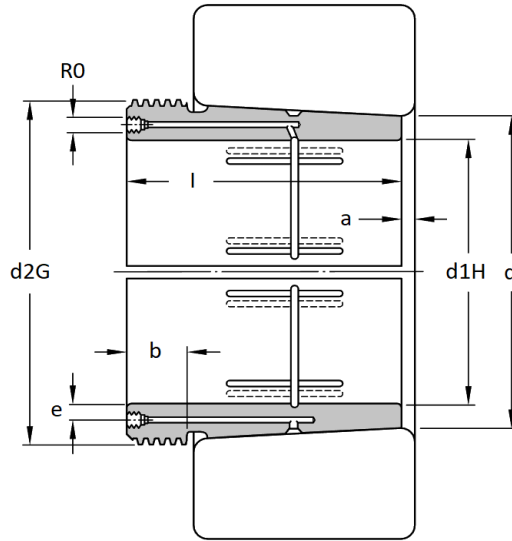
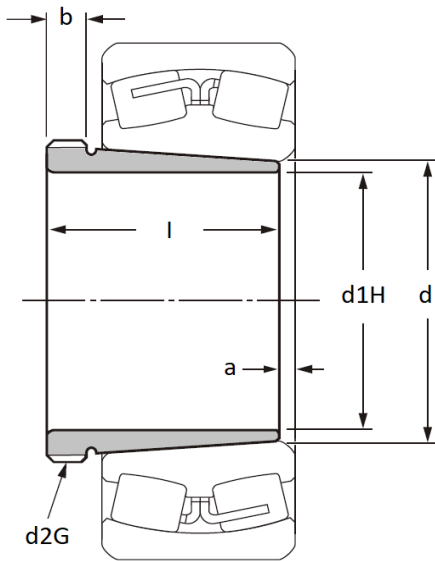


AH & AHX 3100 Series - Withdrawal Sleeves

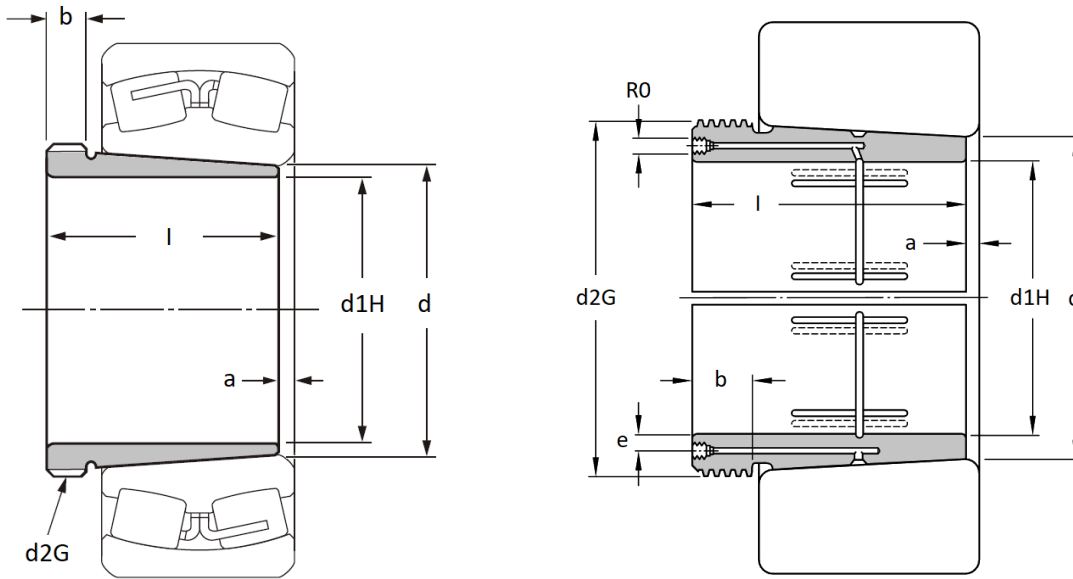
main dimensions to DIN 5416, taper 1:12, use with shaft tolerances h7, h8 and h9. Prefix AOH = Hydraulic mounting, suffix A & G = different thread.



Part No.	Dimensions (mm)								Weight (kg)
	d1H mm	l	a	b	d	d2G	e	R0	
AHX 3120	95	64	4	11	100	M110x2	-	-	0,67
AHX 3122	105	68	4	11	110	M120x2	-	-	0,79
AHX 3124	115	75	4	12	120	M130x2	-	-	0,97
AHX 3126	125	78	4	12	130	M140x2	-	-	1,10
AHX 3128	135	83	5	14	140	M150x2	-	-	1,29
AHX 3130 G	145	96	5	15	150	M160x3	-	-	1,66
AHX 3130	145	96	5	15	150	M165x3	-	-	1,81
AH 3132 A	150	103	5	16	160	M170x3	-	-	2,90
AOH 3132 A	150	103	5	16	160	M170x3	4,5	M6	2,90
AOH 3134	160	104	5	16	170	M190x3	4,5	M6	3,40
AH 3134	160	104	5	16	170	M190x3	-	-	3,40
AOH 3134 A	160	104	5	16	170	M180x3	4,5	M6	3,12
AH 3134 A	160	104	5	16	170	M180x3	-	-	3,12
AH 3136 A	170	116	6	19	180	M190x3	-	-	3,79
AOH 3136 A	170	116	6	19	180	M190x3	4,5	M6	3,79
AH 3138	180	125	6	20	190	Tr210x4	-	-	4,89
AH 3138 G	180	125	6	20	190	M200x3	-	-	4,39
AOH 3138 G	180	125	6	20	190	M200x3	4,5	M6	4,39
AOH 3138	180	125	6	20	190	Tr210x4	4,5	M6	4,89
AOH 3140	190	134	6	21	200	Tr220x4	4,5	M6	5,60
AH 3140	190	134	6	21	200	Tr220x4	-	-	5,60
AH 3144	200	145	6	23	220	Tr240x4	-	-	10,40
AOH 3144	200	145	6	23	220	Tr240x4	8,5	G1/8	10,40
AH 3148	220	154	7	25	240	Tr260x4	-	-	12,30
AOH 3148	220	154	7	25	240	Tr260x4	8,5	G1/8	12,30
AOH 3152	240	172	7	26	260	Tr290x4	8,5	G1/8	16,00
AOH 3152 G	240	172	7	26	260	Tr280x4	8,5	G1/8	15,10

AH & AHX 3100 Series - Withdrawal Sleeves

main dimensions to DIN 5416, taper 1:12, use with shaft tolerances h7, h8 and h9. Prefix AOH = Hydraulic mounting, suffix A & G = different thread.



Part No.	Dimensions (mm)								Weight (kg)
	d1H	l	a	b	d	d2G	e	R0	
AH 3152 G	240	172	7	26	260	Tr280x4	-	-	15,1
AH 3152	240	172	7	26	260	Tr290x4	-	-	16,0
AOH 3156	260	175	8	28	280	Tr310x5	8,5	G1/8	17,7
AOH 3156 G	260	175	8	28	280	Tr300x4	8,5	G1/8	16,7
AH 3156 G	260	175	8	28	280	Tr300x4	-	-	16,7
AH 3156	260	175	8	28	280	Tr310x5	-	-	17,7
AOH 3160	280	192	8	30	300	Tr330x5	8,5	G1/8	21,2
AOH 3160 G	280	192	8	30	300	Tr320x5	8,5	G1/8	20,0
AH 3160 G	280	192	8	30	300	Tr320x5	-	-	20,0
AH 3160	280	192	8	30	300	Tr330x5	-	-	21,2
AOH 3164 G	300	209	8	31	320	Tr340x5	8,5	G1/8	23,6
AOH 3164	300	209	8	31	320	Tr350x5	8,5	G1/8	24,9
AOH 3168	320	225	9	33	340	Tr370x5	8,5	G1/8	28,9
AOH 3168 G	320	225	9	33	340	Tr360x5	8,5	G1/8	27,5
AOH 3172 G	340	229	9	35	360	Tr380x5	8,5	G1/8	29,8
AOH 3172	340	229	9	35	360	Tr400x5	8,5	G1/8	33,1
AOH 3176	360	232	10	36	380	Tr420x5	8,5	G1/8	35,6
AOH 3176 G	360	232	10	36	380	Tr400x5	8,5	G1/8	32,0
AOH 3180 G	380	240	10	38	400	Tr420x5	8,5	G1/8	35,1
AOH 3180	380	240	10	38	400	Tr440x5	8,5	G1/8	39,1
AOH 3184	400	266	10	40	420	Tr460x5	8,5	G1/8	46,4
AOH 3184 G	400	266	10	40	420	Tr440x5	8,5	G1/8	42,0
AOHX 3188 G	420	270	11	42	440	Tr460x5	8,5	G1/8	44,9
AOHX 3188	420	270	11	42	440	Tr480x5	8,5	G1/8	49,7
AOHX 3192 G	440	285	11	43	460	Tr480x5	8,5	G1/8	50,3
AOHX 3192	440	285	11	43	460	Tr510x6	8,5	G1/8	58,0
AOHX 3196	460	295	12	45	480	Tr530x6	8,5	G1/8	63,3
AOHX 3196 G	460	295	12	45	480	Tr500x5	8,5	G1/8	54,8