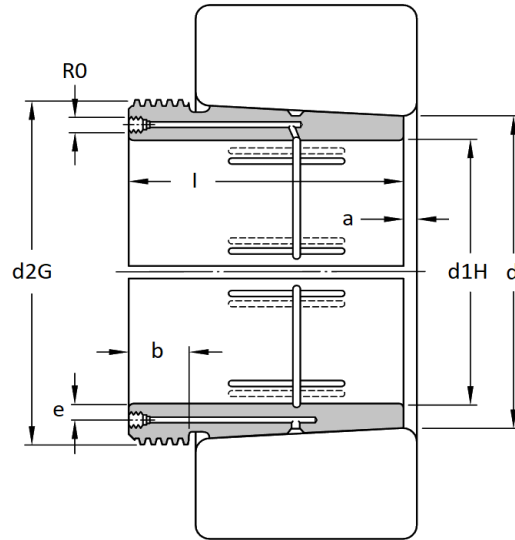
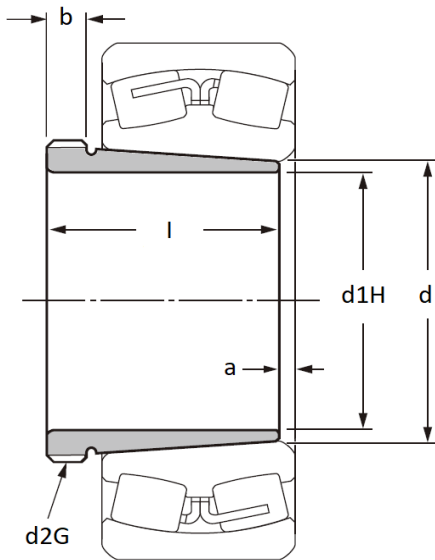


AH & AHX 2300 Series - Withdrawal Sleeves

main dimensions to DIN 5416, taper 1:12, use with shaft tolerances h7, h8 and h9. Prefix AOH = Hydraulic mountin G, suffix G = different thread.

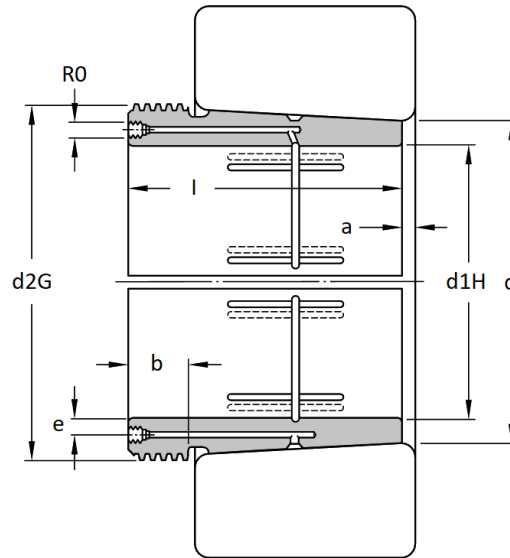
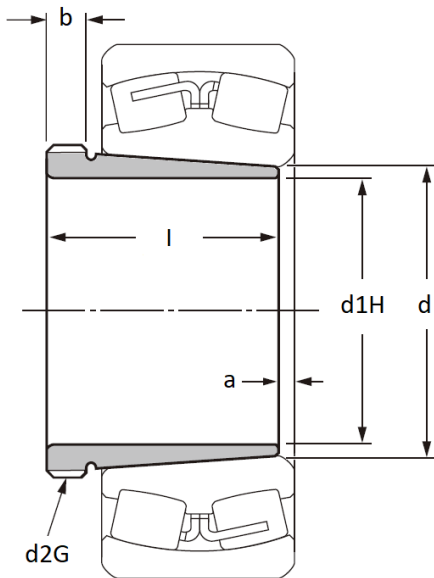


Part No.	Dimensions (mm)								Wei Ght (k G)
	d1H mm	l	a	b	d	d2 G	e	R0	
AH 2308	35	40	3	7	40	M45x1,5	-	-	0,13
AH 2309	40	44	3	7	45	M50x1,5	-	-	0,17
AHX 2310	45	50	3	9	50	M55x2	-	-	0,22
AHX 2311	50	54	3	10	55	M60x2	-	-	0,26
AHX 2312	55	58	3	11	60	M65x2	-	-	0,32
AH 2313	60	61	3	12	65	M75x2	-	-	0,42
AH 2313 G	60	61	3	12	65	M70x2	-	-	0,36
AHX 2314 G	65	64	4	12	70	M75x2	-	-	0,42
AHX 2314	65	64	4	12	70	M80x2	-	-	0,47
AHX 2315	70	68	4	12	75	M85x2	-	-	0,54
AHX 2315 G	70	68	4	12	75	M80x2	-	-	0,48
AHX 2316	75	71	4	12	80	M90x2	-	-	0,61
AHX 2317	80	74	4	13	85	M95x2	-	-	0,68
AHX 2318	85	79	4	14	90	M100x2	-	-	0,78
AHX 2319	90	85	4	16	95	M105x2	-	-	0,91
AHX 2320	95	90	4	16	100	M110x2	-	-	1,03
AHX 2322	105	98	4	16	110	M125x2	-	-	1,38
AHX 2322 G	105	98	4	16	110	M120x2	-	-	1,26
AHX 2324	115	105	4	17	120	M135x2	-	-	1,64
AHX 2324 G	115	105	4	17	120	M130x2	-	-	1,5
AHX 2326 G	125	115	4	19	130	M140x2	-	-	1,84
AHX 2326	125	115	4	19	130	M145x2	-	-	2
AHX 2328	135	125	5	20	140	M155x3	-	-	2,4
AHX 2328 G	135	125	5	20	140	M150x2	-	-	2,21
AHX 2330	145	135	5	24	150	M165x3	-	-	2,88
AHX 2330 G	145	135	5	24	150	M160x3	-	-	2,64
AOH 2332	150	140	6	24	160	M180x3	-	-	4,77

AH & AHX 2300 Series - Withdrawal Sleeves

main dimensions to DIN 5416, taper 1:12, use with shaft tolerances h7, h8 and h9. Prefix

AOH = Hydraulic mountin G, suffix G = different thread.



Part No.	Dimensions (mm)								Wei Ght (k G)
	d1H mm	l	a	b	d	d2 G	e	R0	
AOH 2332 G	150	140	6	24	160	M170x3	4,5	M6	4,26
AH 2332 G	150	140	6	24	160	M170x3	-	-	4,26
AH 2332	150	140	6	24	160	M180x3	-	-	4,77
AH 2334	160	146	6	24	170	M190x3	-	-	5,32
AH 2334 G	160	146	6	24	170	M180x3	-	-	4,78
AOH 2334 G	160	146	6	24	170	M180x3	4,5	M6	4,78
AOH 2334	160	146	6	24	170	M190x3	4,5	M6	5,32
AOH 2336	170	154	6	26	180	M200x3	4,5	M6	6,04
AOH 2336 G	170	154	6	26	180	M190x3	4,5	M6	5,42
AH 2336 G	170	154	6	26	180	M190x3	-	-	5,42
AH 2336	170	154	6	26	180	M200x3	-	-	6,04
AH 2338	180	160	7	26	190	Tr210x4	-	-	6,67
AH 2338 G	180	160	7	26	190	M200x3	-	-	6,02
AOH 2338 G	180	160	7	26	190	M200x3	4,5	M6	6,02
AOH 2338	180	160	7	26	190	Tr210x4	4,5	M6	6,67
AOH 2340	190	170	7	30	200	Tr220x4	4,5	M6	7,64
AH 2340	190	170	7	30	200	Tr220x4	-	-	7,64
AH 2344	200	181	8	30	220	Tr240x4	-	-	13,6
AOH 2344	200	181	8	30	220	Tr240x4	8,5	G1/8	13,6
AH 2348	220	189	8	30	240	Tr260x4	-	-	15,6
AOH 2348	220	189	8	30	240	Tr260x4	8,5	G1/8	15,6
AOH 2352	240	205	8	30	260	Tr290x4	8,5	G1/8	19,7
AOH 2352 G	240	205	8	30	260	Tr280x4	8,5	G1/8	18,7
AH 2352 G	240	205	8	30	260	Tr280x4	-	-	18,7
AH 2352	240	205	8	30	260	Tr290x4	-	-	19,7
AH 2356	260	212	8	30	280	Tr310x4	-	-	22,1
AH 2356 G	260	212	8	30	280	Tr300x4	-	-	20,9
AOH 2356 G	260	212	8	30	280	Tr300x4	8,5	G1/8	20,9
AOH 2356	260	212	8	30	280	Tr310x4	8,5	G1/8	22,1