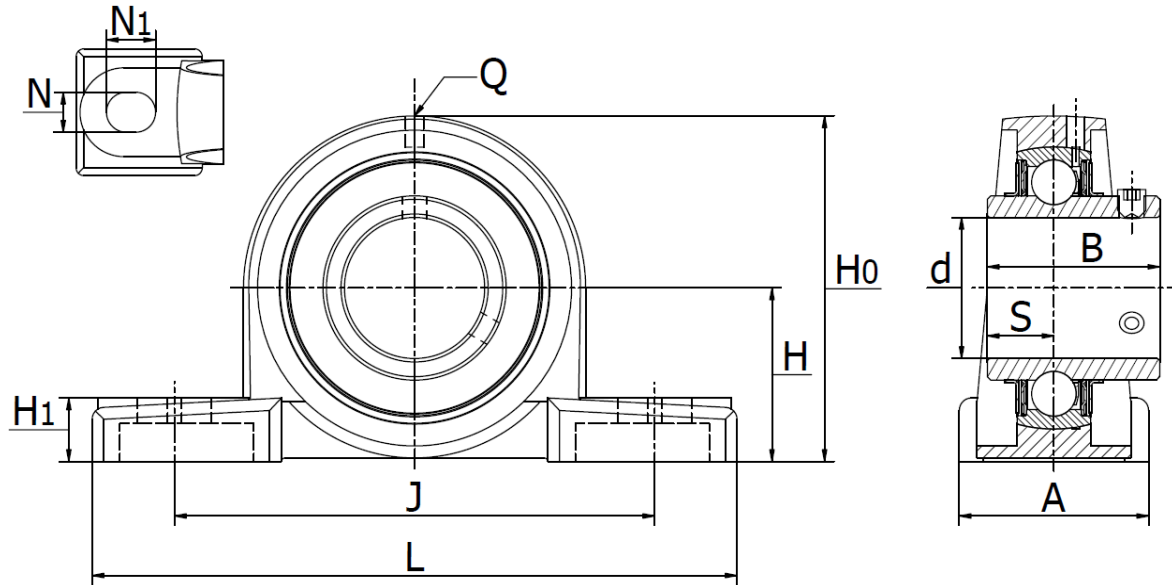




UCP 200 SS - Stainless Steel Pillow Block Units

Set Screw Locking, normal duty, also available in a solid base version, FDA & NSF.



Part No.	d mm	Dimensions (mm)										Mounting		Mass (kg)
		H	L	J	A	N	N ₁	H ₁	H ₀	S	B	Q	Bolt	
UCP 204 SS	20	33,3	125,5	95	37,0	13	19	15	64,0	12,7	31	M6	M10	0,65
UCP 205 SS	25	36,5	138,5	105	37,5	13	19	16	70,5	14,3	34,1	M6	M10	0,72
UCP 206 SS	30	42,9	164,0	121	47,0	17	21	17	83,0	15,9	38,1	M6	M14	1,15
UCP 207 SS	35	47,6	167,0	127	47,5	17	21	17,5	93,0	17,5	42,9	M6	M14	1,53
UCP 208 SS	40	49,2	183,0	137	53,5	17	21	18	99,5	19,0	49,2	M6	M14	1,88
UCP 209 SS	45	54,0	188,0	146	53,5	17	21	20	105,5	19,0	49,2	M6	M14	2,10
UCP 210 SS	50	57,2	204,0	159	59,5	20	25	22	112,5	19,0	51,6	M6	M16	2,50
UCP 211 SS	55	63,5	219,0	172	60,0	20	25	23	126,0	22,2	55,6	M6	M16	3,30
UCP 212 SS	60	69,8	241,0	184	70,0	20	25	25	138,0	25,4	65,1	M6	M16	5,50
UCP 213 SS	65	76,2	264,0	203	70,0	25	30	27	151,0	25,4	65,1	M6	M20	5,60
UCP 214 SS	70	79,4	266,0	210	72,0	25	30	27	157,0	30,2	74,6	M6	M20	6,60
UCP 215 SS	75	82,6	275,0	217	74,0	25	30	28	163,0	33,3	77,8	M6	M20	7,30
UCP 216 SS	80	88,9	292,0	232	78,0	25	30	30	175,0	33,3	82,6	M6	M20	8,30

Add suffix **SOLID** to order the solid base version.

Materials:

Bearing Inserts:

Inner & Outer Races: AISI 420-440 Stainless

Cage: AISI 302 Stainless

Balls: AISI 420-440 Stainless

Seals: Rubber & AISI 302 Stainless

Set Screws: AISI 420 Stainless

Grease Nipple: AISI 304

Grease: Mobil FM 222 Food Grade FDA & NSF approved

Housing:

AISI 304 Stainless, also available in a solid base version.

The solid base version has no cavities in the bottom where dirt can collect over time, thus making it easier to keep clean.