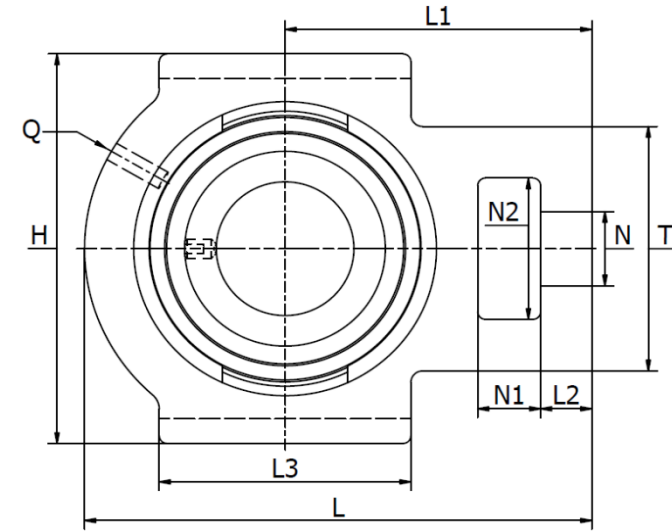
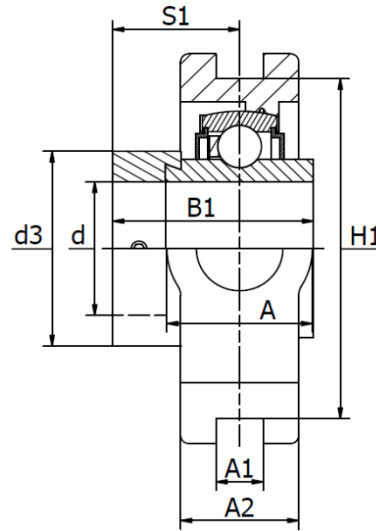




SKL .. A - Take-Up Housing (RTUE..)

Cast iron housing, radial insert ball bearing with eccentric locking collar. Temperature range -30°C to +110°C



Product No.	d mm	Dimensions (mm)																	Bearing No.	Weight (kg)
		L	H	A	A ₁	A ₂	B ₁	d _{3max}	H ₁	L ₁	L ₂	L ₃	N	N ₁	N ₂	Q	S ₁	T		
SKL 20 A	20	94	89	34,2	12	21	43,7	33,0	76	61	10	51	19	16	32,0	M6	26,6	51	HC 204	0,87
SKL 25 A	25	97	89	34,8	12	24	44,3	37,5	76	62	10	51	19	16	32,0	M6	26,9	51	HC 205	0,91
SKL 30 A	30	112,5	102	36,4	12	25	48,3	44,0	89	70	8,5	57	21	18	36,0	M6	30,1	56	HC 206	1,24
SKL 35 A	35	129	102	37,6	12	30	51,1	51,0	89	78	13	64	22	16	37,0	M6	32,3	64	HC 207	1,80
SKL 40 A	40	144	114	42,8	16	33	56,3	60,3	102	88	16	83	29	19	49,0	M6	34,9	83	HC 208	2,52
SKL 45 A	45	144	117	42,8	16	35	56,3	63,0	102	87	16	83	29	19	49,0	M6	34,9	83	HC 209	2,61
SKL 50 A	50	149	117	49,2	16	37	62,7	69,0	102	90	16	86	29	19	49,0	M6	38,1	83	HC 210	2,65
SKL 55 A	55	169	145	55,4	22	42	71,3	76,0	130	104	17	95	35	26	63,5	M6	43,6	102	HC 211	4,60
SKL 60 A	60	194	146	61,8	22	42	77,7	84,0	130	119	19	102	35	32	64,0	M6	46,8	102	HC 212	4,84
SKL 65 A	65	224	167	48,5	26	44	65,1	96,0	151	137	21	121	41	32	70,0	M6	44,6	111	HC 213	7,46
SKL 70 A	70	224	167	48,5	26	46	66,0	96,0	151	137	21	121	41	32	70,0	M6	44,6	111	HC 214	7,20
SKL 75 A	75	214	166	49,5	25	50	67,1	100,0	151	135	20	120	41	35	70,0	M6	45,6	110	HC 215	7,05
SKL 80 A	80	235	184	53,2	26	51	70,7	108,0	165	140	21	121	41	32	70,0	M6	47,3	111	HC 216	8,40
SKL 90 A	90	275	215	52	28	55	69,5	118,0	190	170	30	140	47	40	80,0	M6	46,5	130	HC 218	11,57
SKL 100 A	100	298	240	57,5	28	64	75,0	132,0	214	183	30	170	53	42	80,0	M6	49,5	130	HC 220	14,55
SKL 120 A*	120	345	285	63,4	32	70	81,0	152,0	255	210	35	190	55	45	95,0	M6	52,5	150	HC 224	22,43

*No grease bore, lubricated for life