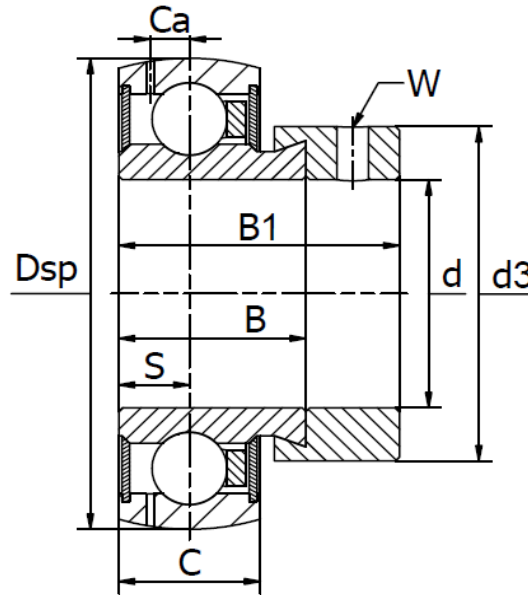




SA 200 Series (GRAE..-NPP-B)

eccentric collar lock, universal regreaseable acc. to common european and japanese standards, lithium based NLGI 2/3 grease. Temperature range -30°C to +110°C.



Bearing No.	Dimensions (mm)									Basic load rating (N)		Weight (kg)
	d	D _{sp}	B ₁	B	C	C _a	d ₃	S	W	C _r	C _{or}	
SA 201 - GRAE12	12	40	28,6	19,0	12	3,4	28,0	6,5	M6	9800	4750	0,13
SA 202 - GRAE15	15	40	28,6	19,0	12	3,4	28,0	6,5	M6	9800	4750	0,11
SA 203 - GRAE17	17	40	28,6	19,0	12	3,4	28,0	6,5	M6	9800	4750	0,10
SA 204 - GRAE20	20	47	31,0	21,4	14	4,0	33,3	7,5	M6	12800	6600	0,16
SA 205 - GRAE25	25	52	31,0	21,4	15	3,9	37,5	7,5	M6	14000	7800	0,19
SA 206 - GRAE30	30	62	35,8	23,8	18	4,7	44,0	9,0	M8	19500	11300	0,32
SA 207 - GRAE35	35	72	39,0	25,4	19	5,6	55,0	9,5	M10	25500	15300	0,47
SA 208 - GRAE40	40	80	43,8	30,2	21	6,4	60,0	11,0	M10	32500	19800	0,62
SA 209 - GRAE45	45	85	43,8	30,2	22	6,4	63,0	11,0	M10	32500	20400	0,70
SA 210 - GRAE50	50	90	43,8	30,2	22	6,9	69,0	11,0	M10	35000	23200	0,77
SA 211 - GRAE55	55	100	48,4	32,5	24	7,0	76,0	12,0	M10	43500	29000	1,06
SA 212 - GRAE60	60	110	53,1	37,1	24	7,2	84,0	13,5	M10	52000	36000	1,40

Seals on both sides, axial preloaded NBR rubber lip seals reinforced by a zinc plated steel disc for extra protection against impact and overlubrication, that can result in pushed out seals.