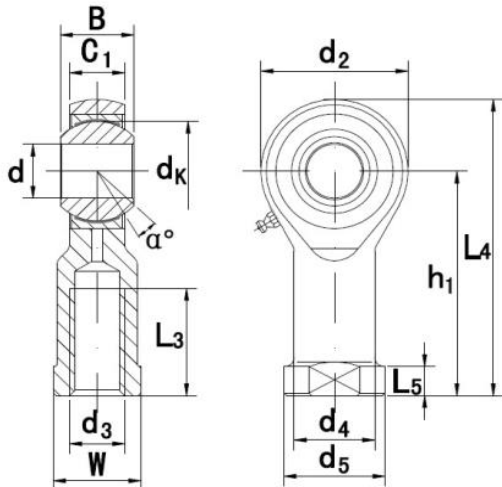


GIKR..PB - Rod ends

with internal thread, requires maintenance, to DIN ISO 12 240-4, right hand thread, (GIKFR..PB).



Rod body with right-hand female thread.

It is made up of a radial spherical plain bearing and rod body.

Surface of rod body zinc plated, with a lubricating hole or grease nipple.

No lubrication grooves and holes in the models marked with a *.

Part No.	Dimensions (mm)													Load ratings (kN)		Weight (kg)	
	d	d ₃	B	C ₁	L ₃	W	d ₂	h ₁	L ₄	L ₅	d ₄	d ₅	d _k	α	dyn. C		stat. C0
GIKR5PB	5	M5x0,8	8	6	10	9	18	27	36	4	8,5	11	11,11	13	5,7	6	0,016
GIKR6PB	6	M6x1,0	9	6,75	12	11	20	30	40	5	10	13	12,7	13	7,2	7,65	0,022
GIKR8PB	8	M8x1,25	12	9	16	14	24	36	48	5	12,5	16	15,875	14	11,6	12,9	0,047
GIKR10PB	10	M10x1,5	14	10,5	20	17	28	43	57	6,5	15	19	19,05	13	14,5	18	0,077
GIKR12PB	12	M12x1,75	16	12	22	19	32	50	66	6,5	17,5	22	22,225	13	17	24	0,1
GIKR14PB	14	M14x2,0	19	13,5	25	22	36	57	75	8	20	25	25,4	16	24	31	0,16
GIKR16PB	16	M16x2,0	21	15	28	22	42	64	85	8	22	27	28,575	15	28,5	39	0,22
GIKR18PB	18	M18x1,5	23	16,5	32	27	44	71	93	10	25	31	31,75	15	42,5	47,5	0,32
GIKR20PB	20	M20x1,5	25	18	33	30	50	77	102	10	27,5	34	34,925	14	42,5	57	0,42
GIKR22PB	22	M22x1,5	28	20	37	32	54	84	111	12	30	38	38,1	15	57	68	0,54
GIKR25PB	25	M24x2,0	31	22	42	36	60	94	124	12	33,5	42	42,86	15	68	85	0,72
GIKR28PB	28	M27x2,0	35	24	51	41	66	103	136	14	37	46	47,63	15	86	107	0,82
GIKR30PB	30	M30x2,0	37	25	51	41	70	110	145	15	40	50	50,8	17	88	114	1100
GIKR35PB	35	M36x2,0	43	28	56	50	81	125	165,5	17	46	58	57,15	16	-	-	1600
GIKR40PB	40	M42x2,0	49	33	60	55	91	142	187,5	19	53	65	66,67	16	-	-	2400
GIKR50PB	50	M48x2,0	60	45	65	65	117	160	218,5	23	65	75	82,5	12	-	-	5000