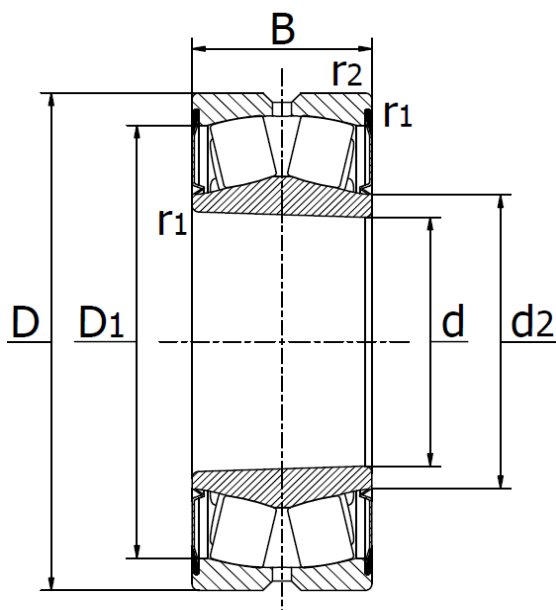


BS2-2200-2CSK Series

Spherical roller bearings, tapered bore 1:12, seal on both sides, lithium based NLGI 2/3 grease, temperature range -30°C to +110°C.



| Type | Dimensions (mm) | | | | | Basic load ratings | | Fatigue load limit | Limiting speed | Mass |
|---------------|-----------------|-----|----|----------------|----------------|--------------------|-------------------------------|---------------------|----------------|------|
| | d | D | B | D ₁ | d ₂ | dynamic C (kN) | static C ₀ (kN) | P _u (kN) | r/min. | kg |
| BS2-2208-2CSK | 40 | 80 | 28 | 73,0 | 47,0 | 96,5 | 90 | 9,8 | 2200 | 0,57 |
| BS2-2209-2CSK | 45 | 85 | 28 | 77,1 | 53,0 | 102,0 | 98 | 10,8 | 2000 | 0,66 |
| BS2-2210-2CSK | 50 | 90 | 28 | 82,1 | 58,0 | 104,0 | 108 | 11,8 | 1900 | 0,70 |
| BS2-2211-2CSK | 55 | 100 | 31 | 91,9 | 64,0 | 125,0 | 127 | 13,7 | 1700 | 1,00 |
| BS2-2212-2CSK | 60 | 110 | 34 | 102,0 | 69,0 | 156,0 | 166 | 18,6 | 1600 | 1,30 |
| BS2-2213-2CSK | 65 | 120 | 38 | 111,0 | 76,0 | 193,0 | 216 | 24,0 | 1500 | 1,60 |
| BS2-2214-2CSK | 70 | 125 | 38 | 115,0 | 80,0 | 208,0 | 228 | 25,5 | 1400 | 1,80 |
| BS2-2215-2CSK | 75 | 130 | 38 | 119,0 | 84,0 | 212,0 | 240 | 26,5 | 1300 | 2,10 |
| BS2-2216-2CSK | 80 | 140 | 40 | 128,0 | 91,5 | 236,0 | 270 | 29,0 | 1200 | 2,40 |
| BS2-2217-2CSK | 85 | 150 | 44 | 138,0 | 98,0 | 285,0 | 325 | 34,5 | 1100 | 3,00 |
| BS2-2218-2CSK | 90 | 160 | 48 | 148,0 | 102,0 | 325,0 | 375 | 39,0 | 1000 | 3,70 |
| BS2-2220-2CSK | 100 | 180 | 55 | 162,0 | 114,0 | 425,0 | 490 | 49,0 | 900 | 5,35 |
| BS2-2222-2CSK | 110 | 200 | 63 | 182,0 | 126,0 | 560,0 | 640 | 63,0 | 800 | 7,6 |
| BS2-2224-2CSK | 120 | 215 | 69 | 193,0 | 136,0 | 630,0 | 765 | 73,5 | 750 | 9,75 |
| BS2-2226-2CSK | 130 | 230 | 75 | 205,0 | 147,0 | 735,0 | 930 | 88,0 | 700 | 11 |

Spherical roller bearings have two rows of rollers with a common sphered raceway in the outer ring and two inner ring raceways inclined at an angle to the bearing axis. This gives them an attractive combination of design features making them irreplaceable in many demanding applications. They are self-aligning and consequently insensitive to misalignment of the shaft relative to the housing and to shaft deflection or bending. Spherical roller bearings are leading in design and can, in addition to high radial loads, accommodate high axial loads acting in both directions.

The bearings in this catalogue are sealed with contact seals on both sides. The seals are reinforced with sheet steel and made of an oil and wear-resistens acrylonitrile butadiene rubber (NBR).