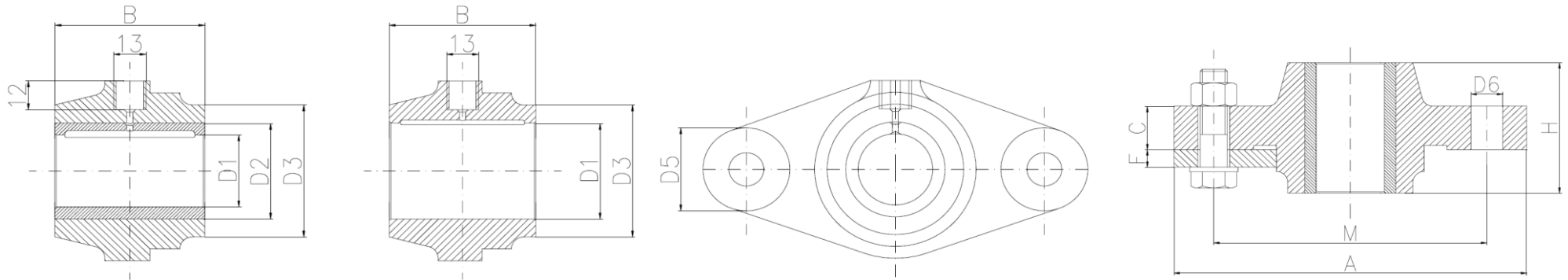


Style A with bushing

Style B without bushing



D1 (D10)		Dimensions (mm)										
Style A	Style B	D2 (D7)	D3 (h9)	D5	Dd6	d7	A	B	C	F	H	M (+/- 1)
-	25	-	50	35	14	M12	135	60	20	20	60	100
-	30	-	50	35	14	M12	135	60	20	20	60	100
25	35	35	65	35	14	M12	155	60	20	20	75	120
30	40	40	65	35	14	M12	155	60	20	20	75	120
35	45	45	80	40	18	M16	180	70	25	20	90	140
40	50	50	80	40	18	M16	180	70	25	20	90	140
45	55	55	90	50	22	M20	210	80	30	20	100	160
50	60	60	90	50	22	M20	210	80	30	20	100	160
55	65*	65	110	50	22	M20	240	90	30	25	120	190
60	70	70	110	50	22	M20	240	90	30	25	120	190
65*	75*	75	130	55	26	M24	275	100	35	25	140	220
70	80	80	130	55	26	M24	275	100	35	25	140	220

Operating conditions: Running speed up to approximately 1,5 m/s.

* = If possible, please avoid this size.