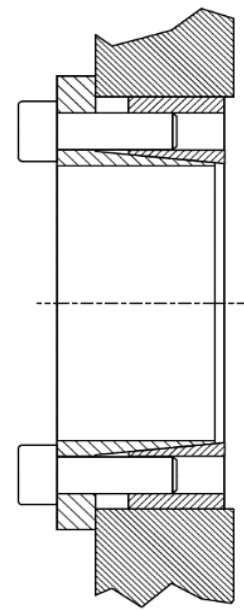
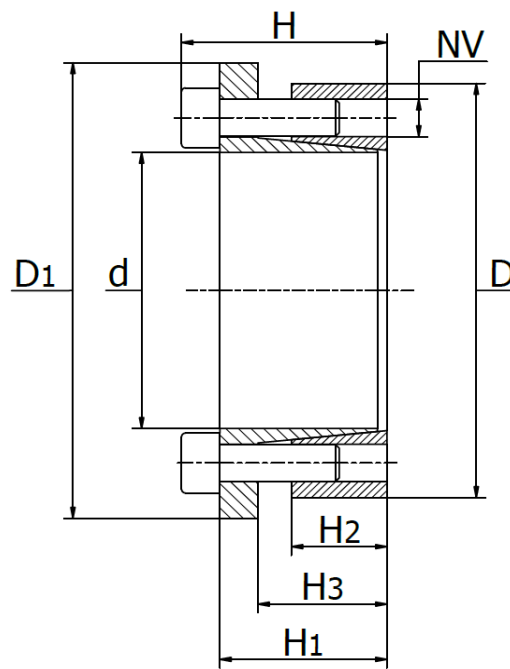




## KLAB Series

Self-centering and locking. Quick maintenance and assembly. Medium to high torque. Positioning shoulder for drive component.  
Pre-assembled



Part No.	d	D	D1	H	H1	H2	H3	Mounting Screws		Removal Screws		Max Transmitted		Shaft Pressure Pa(Nmm <sup>2</sup> )	Hub Pressure Pm(Nmm <sup>2</sup> )	Weight kg
								NV	Torque(Nm)	Screws	NV	Screws	Torque Mt(Nm)	Thrust Ta(kN)		
KLAB019	19	47	56	34	28	17	22	M6x20	17	5	M6	3	243	26	234	0,30
KLAB020	20	47	56	34	28	17	22	M6x20	17	5	M6	3	256	26	222	0,30
KLAB022	22	47	56	34	28	17	22	M6x20	17	5	M6	3	282	26	202	0,30
KLAB024	24	50	59	34	28	17	22	M6x20	17	6	M6	3	368	31	222	0,35
KLAB025	25	50	59	34	28	17	22	M6x20	17	6	M6	3	383	31	213	0,33
KLAB028	28	55	64	34	28	17	22	M6x20	17	6	M6	3	429	31	190	0,40
KLAB030	30	55	64	34	28	17	22	M6x20	17	6	M6	3	460	31	177	0,40
KLAB032	32	60	69	34	28	17	22	M6x20	17	8	M6	4	655	41	222	0,45
KLAB035	35	60	69	34	28	17	22	M6x20	17	8	M6	4	716	41	203	0,40
KLAB038	38	65	74	34	28	17	22	M6x20	17	8	M6	4	778	41	187	1,00
KLAB040	40	65	74	34	28	17	22	M6x20	17	8	M6	4	819	41	178	0,40
KLAB045	45	75	84	41	33	20	25	M8x25	41	7	M8	3	1458	65	212	0,75
KLAB050	50	80	89	41	33	20	25	M8x25	41	7	M8	3	1620	65	191	0,80
KLAB055	55	85	94	41	33	20	25	M8x25	41	8	M8	4	2037	74	199	0,80
KLAB060	60	90	99	41	33	20	25	M8x25	41	8	M8	4	2223	74	182	1,00
KLAB065	65	95	104	41	33	20	25	M8x25	41	9	M8	3	2710	83	189	1,02
KLAB070	70	110	119	50	40	24	30	M10x30	83	8	M10	4	4203	120	211	0,70
KLAB075	75	115	124	50	40	24	30	M10x30	83	8	M10	4	4754	120	197	1,80
KLAB080	80	120	129	50	40	24	30	M10x30	83	8	M10	4	4804	120	184	2,00
KLAB085	85	125	134	50	40	24	30	M10x30	83	9	M10	3	5742	135	195	2,10
KLAB090	90	130	139	50	40	24	30	M10x30	83	9	M10	3	6080	135	184	2,00
KLAB095	95	135	144	50	40	25	30	M10x30	83	10	M10	4	7131	150	194	2,20
KLAB100	100	145	154	56	44	26	32	M12x35	145	8	M12	4	8732	175	198	2,85
KLAB110	110	155	164	56	44	26	32	M12x35	145	8	M12	4	9605	175	180	3,00
KLAB120	120	165	174	56	44	26	32	M12x35	145	9	M12	4	11787	196	186	3,50
KLAB130	130	180	189	64	52	34	40	M12x35	145	12	M12	6	17024	262	175	4,90
KLAB140	140	190	199	68	54	34	40	M14x40	230	9	M14	4	18703	267	166	5,00
KLAB150	150	200	209	68	54	34	40	M14x40	230	10	M14	5	22259	297	172	5,85

**PM** = Pressure of the locking device on the hub

**Pa** = Pressure of the locking device on the shaft

**Ta**= Transmittable axial force

**Tv** = Screw tightening torque

**Tm** = Axial exerted force

**Mt** = Transmittable torque of the locking device

**Pt** = Radial force (pressure)

**Tolerance:** Shaft tolerance = h8  
Shaft roughness = Rz<=16µm

Hub tolerance = H8  
Hub roughness = Rz<=16µm

**Dimensions:** All dimensions are before mounting.