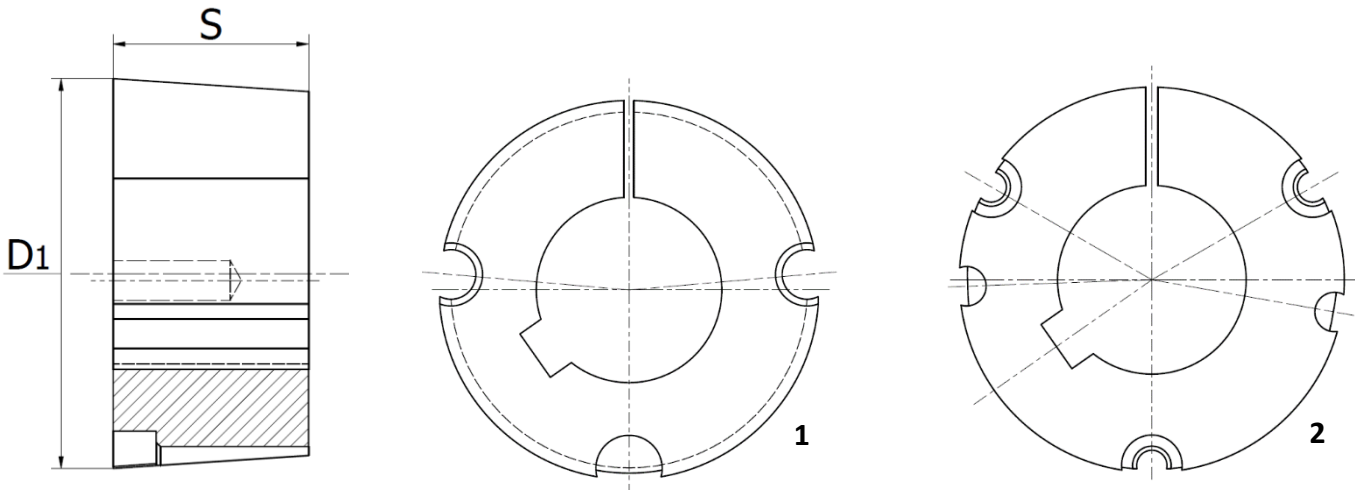




Taper Bushes

Taper Bushes makes assembly and disassembly of V-belt pulleys, sprockets, couplings, weld-on hubs and pulleys quick and easy.

Available in metric- and inch sizes. We offer certain sizes in a reinforced version of steel.



Standard inch bore series

Material: cast Iron (EN-GJL-250 UNI EN 1561

Example of suffix : TB 1108-1 1-8"

Bush type	Dimensions			Type	Max. Torque (Nm)	Screws	Screw tightening torque (Nm)	Weight (kg)
	Bore in inches (ISO E 8)	D1 mm	S mm					
1008	3/8"   1/2"   5/8"   3/4"   7/8"   1" *	35,0	22,3	1	136	1/4" x 1/2"	5,6	0,16
1108	3/8"   1/2"   5/8"   3/4"   7/8"   1"   1"1/8*	38,0	22,3	1	147	1/4" x 1/2"	5,6	0,16
1210	1/2"   5/8"   3/4"   7/8"   1"   1"1/8   1"1/4	47,5	25,4	1	407	3/8" x 5/8"	19,6	0,32
1215	1/2"   5/8"   3/4"   7/8"   1"   1"1/8   1"1/4	47,5	38,1	1	407	3/8" x 5/8"	19,6	0,50
1610	1/2"   5/8"   3/4"   7/8"   1"   1"1/8   1"1/4	57,0	25,4	1	486	3/8" x 5/8"	19,6	0,41
1615	1/2"   5/8"   3/4"   7/8"   1"   1"1/8   1"1/4   1"3/8   1"1/2   1"5/8*	57,0	38,1	1	486	3/8" x 5/8"	19,6	0,60
2012	3/4"   7/8"   1"   1"1/8   1"1/4   1"3/8   1"1/2   1"5/8   1"3/4   1"7/8   2"	70,0	31,8	1	808	7/16" x 7/8"	30,4	0,75
2517	3/4"   7/8"   1"   1"1/8   1"1/4   1"3/8   1"1/2   1"5/8   1"3/4   1"7/8   2"   2"1/8   2"1/4   2"3/8   2"1/2	85,5	44,5	1	1310	1/2" x 1"	48,0	1,06
3020	1"1/4   1"3/8   1"1/2   1"5/8   1"3/4   1"7/8   2"   2"1/8   2"1/4   2"3/8   2"1/2   2"5/8   2"3/4   2"7/8   3"	108,0	50,8	1	2710	5/8" x 1"1/4	90,0	2,50
3030	1"1/4   1"3/8   1"1/2   1"5/8   1"3/4   1"7/8   2"   2"1/8   2"1/4   2"3/8   2"1/2   2"5/8   2"3/4   2"7/8   3"	108,0	76,2	1	2710	5/8" x 1"1/4	90,0	3,75
3525	1"1/2   1"5/8   1"3/4   1"7/8   2"   2"1/8   2"1/4   2"3/8   2"1/2   2"5/8   2"3/4   2"7/8   3"   3"1/8   3"1/4   3"3/8   3"1/2	127,0	64,9	2	5060	1/2" x 1"1/2	112,0	4,20
3535	1"1/2   1"5/8   1"3/4   1"7/8   2"   2"1/8   2"1/4   2"3/8   2"1/2   2"5/8   2"3/4   2"7/8   3"   3"1/8   3"1/4   3"3/8   3"1/2	127,0	88,9	2	5060	1/2" x 1"1/2	112,0	5,13
4030	1"3/4   1"7/8   2"   2"1/8   2"1/4   2"3/8   2"1/2   2"5/8   2"3/4   2"7/8   3"   3"1/8   3"1/4   3"3/8   3"1/2   3"3/4   4"	146,0	76,2	2	8740	5/8" x 1"3/4	169,0	6,75
4040	1"3/4   1"7/8   2"   2"1/8   2"1/4   2"3/8   2"1/2   2"5/8   2"3/4   2"7/8   3"   3"1/8   3"1/4   3"3/8   3"1/2   3"3/4   4"	146,0	101,6	2	8740	5/8" x 1"3/4	169,0	7,68
4545	2"1/4   2"3/8   2"1/2   2"5/8   2"3/4   2"7/8   3"   3"1/8   3"1/4   3"3/8   3"1/2   3"3/4   4"   4"1/4   4"1/2	162,0	115,0	2	12400	3/4" x 2"	192,0	10,56
5040	2"3/4   2"7/8   3"   3"1/8   3"1/4   3"3/8   3"1/2   3"3/4   4"   4"1/4   4"1/2   4"3/4   5"	177,6	101,6	2	14200	7/8" x 2"1/4	271,0	14,20
5050	2"3/4   2"7/8   3"   3"1/8   3"1/4   3"3/8   3"1/2   3"3/4   4"   4"1/4   4"1/2   4"3/4   5"	177,6	127,0	2	14200	7/8" x 2"1/4	271,0	15,17

Dimension of the keyways ( B.S. 46 - Part. 1-1958)

D - Over/to	b	t	D - Over/to	b	t
1/4" - 1/2"	1/8"	D + 1/16"	2"1/2 - 3"	3/4"	D + 1/4"
1/2" - 3/4"	3/16"	D + 3/32"	3" - 3"1/2	7/8"	D + 5/16"
3/4" - 1"	1/4"	D + 1/8"	3"1/2 - 4"	1"	D + 3/8"
1" - 1"1/4	5/16"	D + 1/8"	4" - 5"	1"1/4	D + 7/16"
1"1/4 - 1"1/2	3/8"	D + 1/8"	5" - 6"	1"1/2	D + 1/2"
1"1/2 - 1"3/4	7/16"	D + 5/32"	6" - 7"	1"3/4	D + 5/8"
1"3/4 - 2"	1/2"	D + 5/32"			
2" - 2"1/2	5/8"	D + 7/32"			

D*	b	T
1"*	1/4"	D + 1/16"
1"1/8 *	5/16"	D + 5/64"
1"5/8 *	7/16"	D + 1/8"

Shafts with a diameter tolerance of +0,05 / -0,125 mm are recommended. Best results are achieved with a ISO h6 tolerance. For shafts up to 100 mm diameter, an affordable forged h9 shaft can be used. To be used with or without key.